



LINE 4_A

VOLUME 23

JANUARY - FEBRUARY 2025



Co-funded by the
European Union



MINISTRY OF
INFRASTRUCTURE
AND TRANSPORT

PROJECT: LINE 4A "ALSOS VEIKOU-GOUDI"



EYDAP Shaft

VEIKOU TBM SHAFT

Page 2



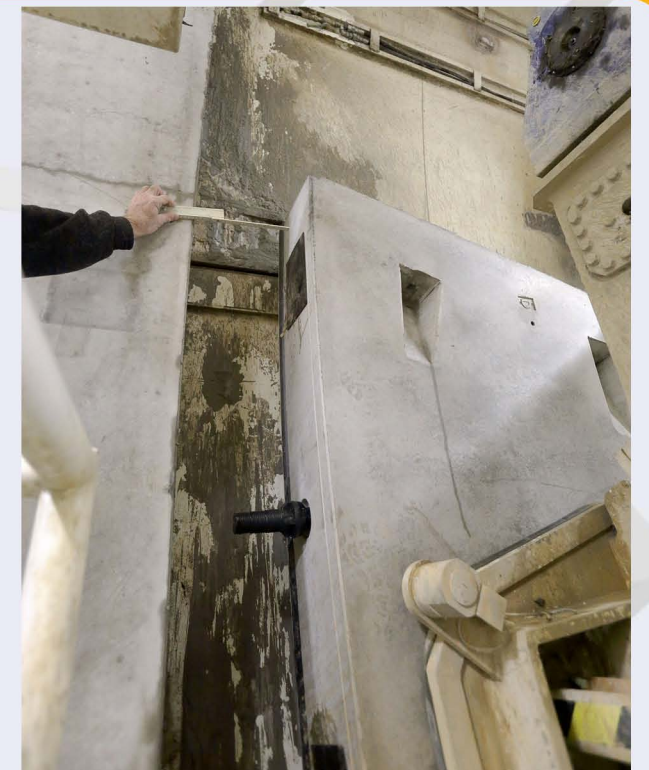
Veikou TBM Shaft.

In Veikou TBM Shaft, the completion percentage of construction works (excavation, temporary retaining, drainage) has reached 90.98%. Additionally, the construction of a reinforcing beam at the crown of the triple tunnel of the Forestation has been completed.

TBM "NIKI"

Page 3

TBM "NIKI" is currently at the 2nd Interstation (ALSOS VEIKOU Station – GALATSI Station) and has bored 490.48 meters out of 753.57 meters. The excavation of the 2nd Interstation is 65.08% complete. It is worth noting that the overall progress of TBM "NIKI" up to Evangelismos Trumpet Shaft, where the TBM will stop, is 13.61% (963.02 meters out of 7,074.33 meters).



Commencement of the procedure for the installation of a precast ring in TBM "NIKI".



Veikou TBM Shaft

ALSOS VEIKOU STATION

Page 4



Construction of piles at the central trench of ALSOS VEIKOU Station.

The construction of 67 piles in the central trench of ALSOS VEIKOU Station has been completed. The cap beam construction at the west entrance has also been successfully finished. Furthermore, traffic arrangements at the south traffic island of Veikou Avenue are ongoing.

GALATSI STATION

Page 5



Central trench of GALATSI Station.

The excavation of the main shaft at GALATSI Station has commenced, with progress currently at 11.2%. Moreover, the construction of the first row of anchors in the main trench is complete, with all 68 anchors installed. Additionally, at the south ventilation shaft, 26 out of 40 piles have been constructed.



VIVLIOTHIKI Shaft

DIKASTIRIA STATION

Page 6



Excavation of NATM tunnel - DIKASTIRIA Station.

At DIKASTIRIA Station, excavation of the central trench is 78% complete. The gradual construction and drilling of anchors up to the 11th level are ongoing. At the north front of the trench, NATM tunnel excavation progress is 66.5% for Phase A1 and 63.4% for Phase A2. At the south front, excavation progress is 73.6% for Phase A1 and 49.5% for Phase A2.

ALEXANDRAS STATION

Page 7



Traffic arrangements - ALEXANDRAS Station.

All 80 piles at ALEXANDRAS Station have been completed. Excavation for the pile cap beam level has begun. Moreover, the OASA bus stop has been relocated, and new sidewalks have been constructed on Moustoxydi Street and at the junction of Schina and Alexandras Avenue, following the reconfiguration works for water drainage.

AKADIMIA STATION

Page 8



Shotcreting at the 8th level of AKADIMIA Station.

At AKADIMIA Station, the excavation of the 8th level of the central trench is underway, with 77.48% completed. Struts for the 4th level have been installed. Moreover, pre-stressed anchor tensioning works in the central trench are 93.82% complete (319 out of 340 anchors). In addition, at the South Shaft, pile construction has begun, with 78.72% completed (37 out of 47 piles).



AKADIMIA Station.

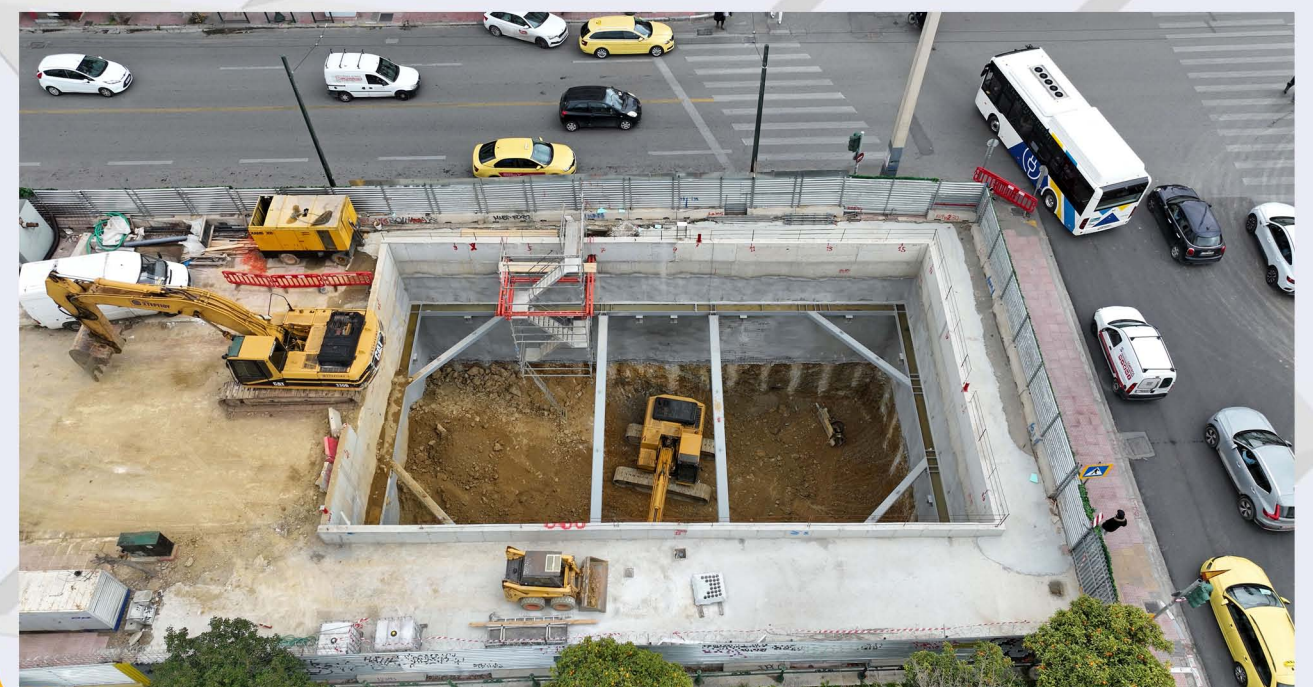
VIVLIOTHIKI SHAFT

Page 9



VIVLIOTHIKI Shaft.

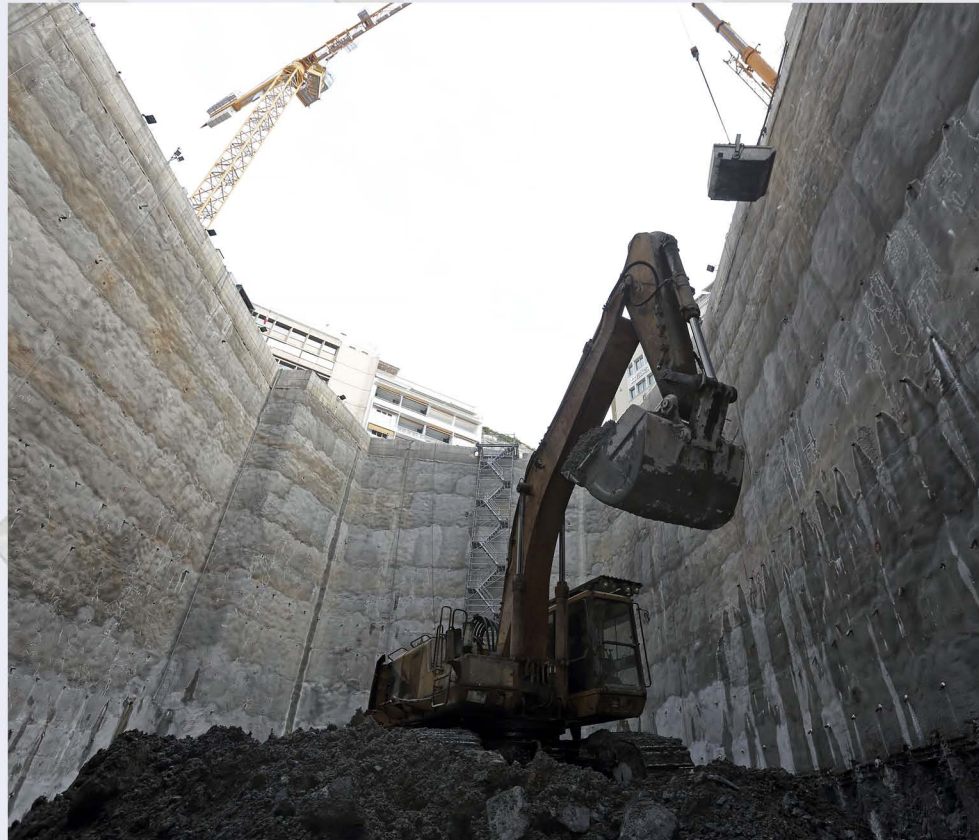
Excavation works are ongoing, with 39.76% of the trench excavated. Work has also started on installing the access staircase on the northern side of the shaft.



Excavation at VIVLIOTHIKI Shaft.

KOLONAKI STATION

Page 10



KOLONAKI Station.

At KOLONAKI Station, the excavation of the central trench has reached 96.09%. The work is ongoing at the 10th level. Moreover, the work platform for pile drilling in the deepening pit has been set up.

In addition, a foundation for mobile cranes has been constructed. At the same time, the pre-stressed anchors in the central trench are 94.18% complete.

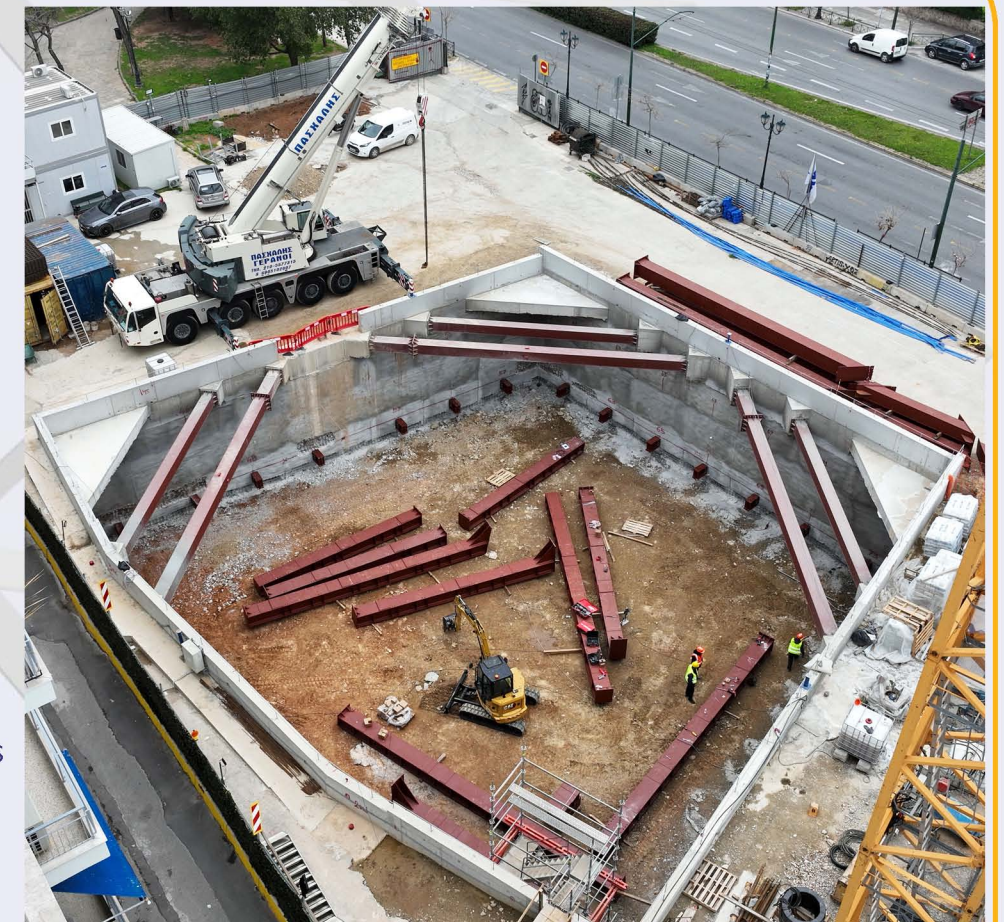


KOLONAKI Station.

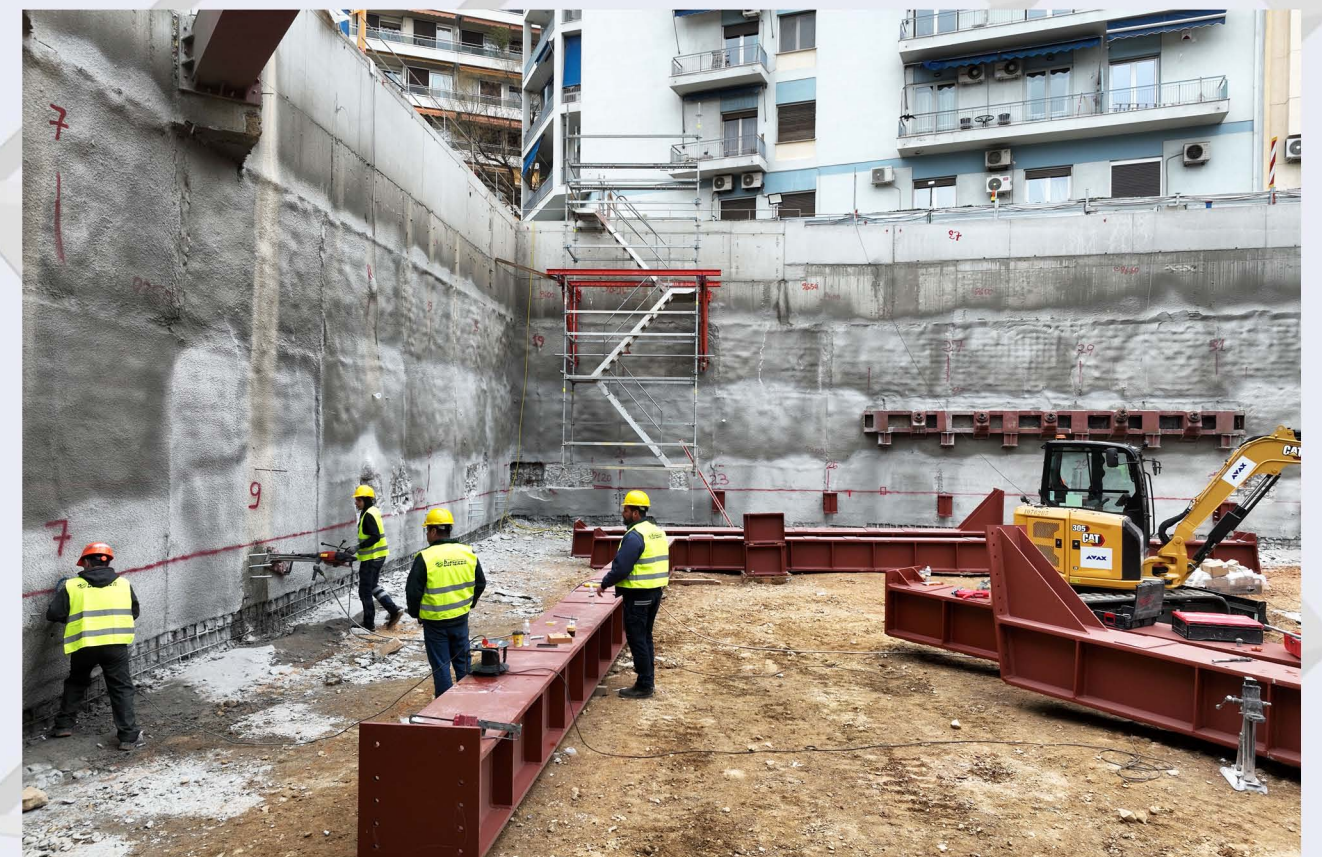
EVANGELISMOS TRUMPET SHAFT

Page 11

Excavation at EVANGELISMOS TRUMPET SHAFT is in progress at the 2nd level, with 24.23% completion. The pre-stressed anchors account for 12.79%, and struts have been installed at the 2nd level. Work has also started on installing the access staircase in the shaft.



EVANGELISMOS TRUMPET Shaft.



Strut installation procedure – EVANGELISMOS Trumpet Shaft.

KESSARIANI STATION

Page 12



Concreting of the pile cap beam – KESSARIANI Station.

Construction of 146 piles has been completed, and the pile cap beam is being constructed progressively, at KESSARIANI Station. So far, 51.70 meters of the cap beam (out of 211.06 meters) have been built, reaching 24.50% progress.

GNA SHAFT

In GNA Shaft, the excavation of the Forestation tunnel is ongoing. Moreover, phase B of the connecting tunnel excavation has also commenced.



Forestation tunnel – GNA Shaft.

TBM "ATHENA"

Page 13

TBM "ATHENA" has bored 13.45m out of the 577.92m of the 5th Interstation (ILISSIA Station-PANEPISTIMIOUPOLI Station) with the excavation progress percentage reaching 2.32%.



Maintenance works inside TBM "ATHENA" excavation chamber.



Maintenance works inside TBM "ATHENA" excavation chamber.

Moreover, TBM's cutter-head and screw have been inspected under atmospheric conditions. Following maintenance and inspection, excavation activities have resumed. The progress of the boring works of TBM "ATHENA" up to Evangelismos Trumpet shaft, where the TBM will stop, reaches 51.66%.

PROJECT: PRELIMINARY WORKS



MINISTRY OF
INFRASTRUCTURE AND
TRANSPORT



WITH CO-FINANCING OF GREECE AND THE EUROPEAN UNION

ZOGRAFOU Station

RELOCATION OF NETWORKS

Page 14



GOUDI Station.

At EXARCHIA Station, the relocation of EYDAP and OTE networks has been completed, while DEDDIE network relocations are ongoing. Reinstatement of sidewalks is also underway. In the meantime, at GOUDI Station, work for relocating DEDDIE and OTE networks continues.

ARCHAEOLOGICAL WORKS

Page 15

Archaeological investigations are ongoing at EXARCHIA, PANEPISTIMIOUPOLI, and ZOGRAFOU Stations. Work has been completed at KIPSELI Station and at the AGHIOS THERAPONTAS Shaft.



Archaeological works – EXARCHIA Station.

ELLINIKO METRO S.A.



LINE

A LANDMARK PROJECT BECAMES REAL!

www.emetro.gr/grammi4

NEWSLETTER LINE 4A

PHOTOS OF LINE 4A PROJECT

Savvas Spyridonos

**All photos used have been sourced from the archives of ELLINIKO METRO S.A. (unless otherwise stated).*

***Cover page photo: DIKASTIRIA Station.*

Contact us on: 210-6792065, 210-6792060 | E-mail: info@emetrometro.gr



Co-funded
by the
European
Union



MINISTRY OF
INFRASTRUCTURE
AND TRANSPORT