



LINE 4_A

VOLUME 22

NOVEMBER - DECEMBER 2024



Co-funded by the
European Union



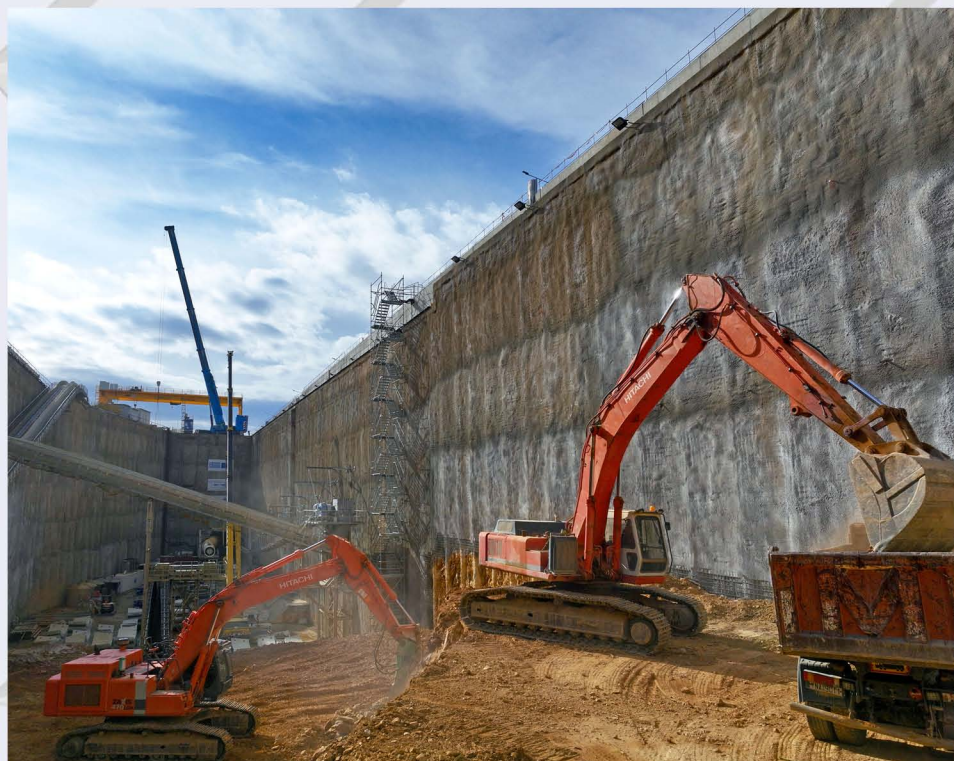
MINISTRY OF
INFRASTRUCTURE
AND TRANSPORT

PROJECT: LINE 4A "ALSOS VEIKOU – GOUDI"

TBM "NIKI"

VEIKOU TBM SHAFT

Page 2



TBM Veikou Shaft.

At Veikou TBM Shaft, the completion percentage of construction works (excavation, temporary retaining, drainage) has reached 86.7%. Additionally, the strut installation at the 4th level of excavation has been completed.

TBM "NIKI"

Page 3

TBM "NIKI" is currently at the 2nd Interstation (ALSOS VEIKOU Station – GALATSI Station), having bored 140.52 meters out of 753.57 meters. The excavation progress for the 2nd Interstation is 18.65%. It is worth noting that the overall progress of TBM "NIKI" from the start up to Evangelismos Trumpet Shaft, where the TBM will stop, is 8.67% (613.06 meters out of 7,074.33 meters).



Transportation of precast rings inside the TBM.

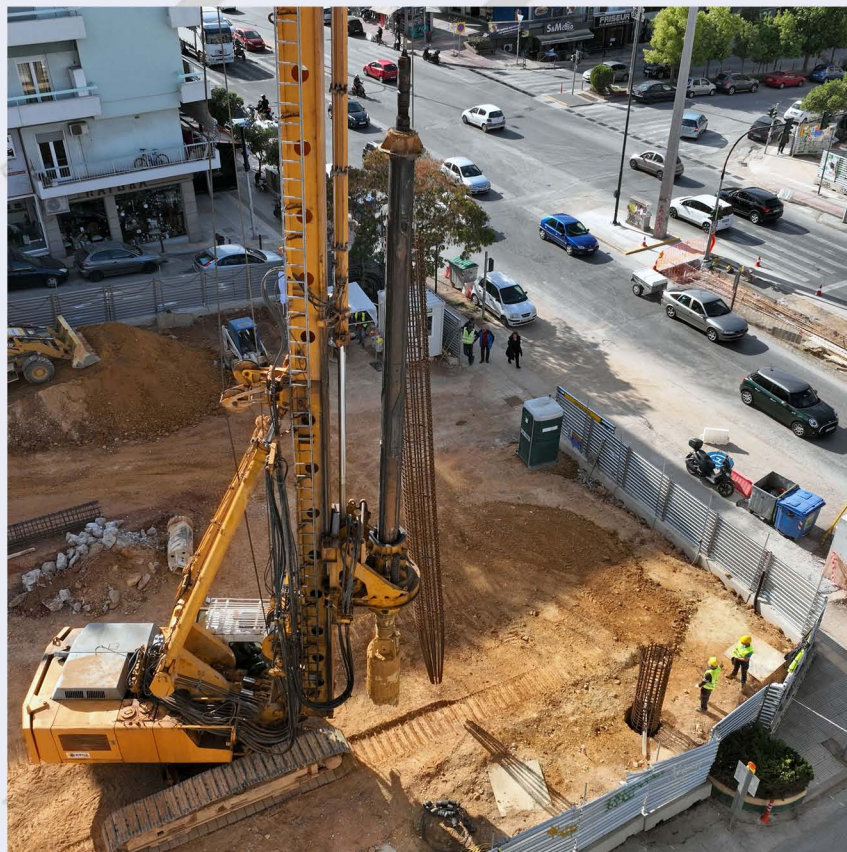


TBM "NIKI"

ALSOS VEIKOU STATION

Page 4

The construction of 36 piles in the west trench of ALSOS VEIKOU Station has been completed. Simultaneously, the cap beam construction at the west entrance is 44% complete. In the central trench, 35 out of 67 piles have been constructed. Moreover, Phase A' of the traffic arrangements activities—successfully implemented—has commenced. Additionally, the street lighting poles have been installed, and their masts relocated to the north traffic island of Veikou Avenue.

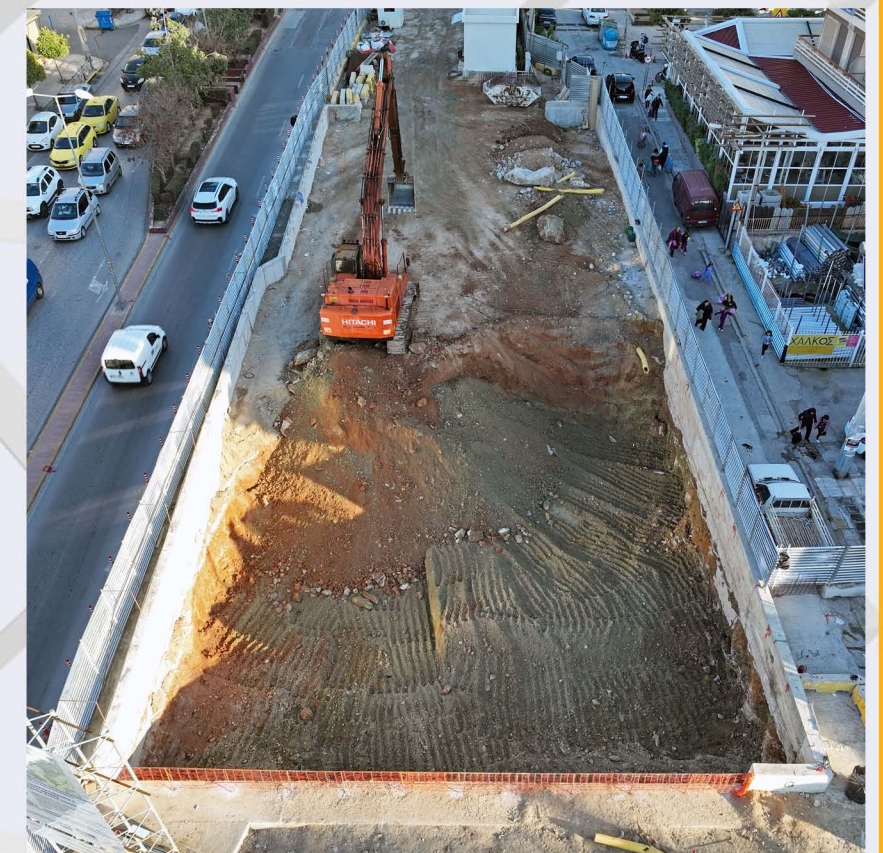


Construction of piles at the central trench of ALSOS VEIKOU Station.

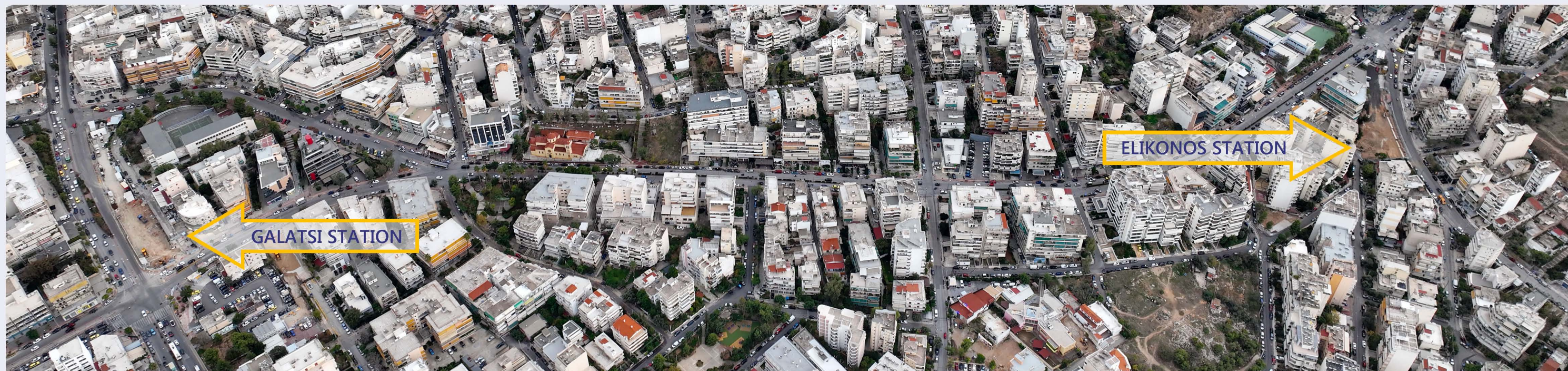
GALATSI STATION

Page 5

Pile cap beam construction in the central trench of GALATSI Station has been completed. At the south ventilation shaft, 26 out of 40 piles have been constructed. A cesspit has been constructed at a veterinary clinic on Galatsiou Avenue, and water sumps have been relocated to the traffic island of Veikou Avenue. Furthermore, Phase B' of the traffic arrangements activities—already successfully implemented—has commenced.



Central trench of GALATSI Station.

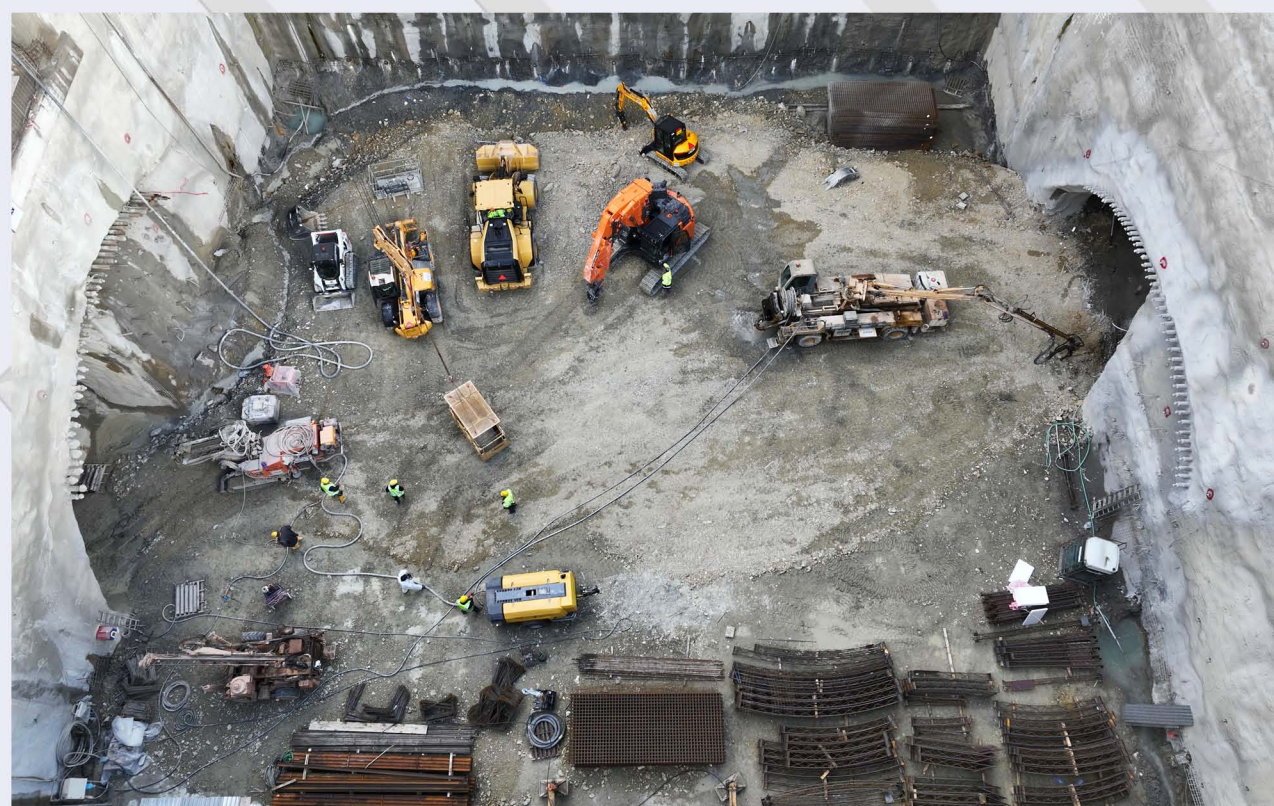


GALATSI STATION

ELIKONOS STATION

DIKASTIRIA STATION

Page 6



Excavation of NATM tunnel - DIKASTIRIA Station.

At DIKASTIRIA Station, the excavation of the central trench is 78% complete. The gradual construction and drilling of anchors up to the 11th level are ongoing. At the north and south fronts of the trench, the NATM tunnel excavation works (Phase A1) have progressed to 32% and 35.6%, respectively.

ALEXANDRAS STATION

Page 7



Traffic arrangements - ALEXANDRAS Station.

Earthworks for the required traffic arrangements at the traffic island of Alexandras Avenue—between Moustoxydi, Vrila, and Psellou Streets—have begun. A new traffic island has been configured via curb installation and embedment, and the ILPAP pole has been embedded.

AKADIMIA STATION

Page 8



Excavation of the 7th level – AKADIMIA Station.

At AKADIMIA Station, excavation of the 7th level of the central trench is underway. The excavation progress in the central trench is at 75.31%.

Strut installation for levels 1, 2, and 3 has been completed.

The tensioning of pre-stressed anchors in the central trench has reached 83.82% (285 out of 340 anchors).

Additionally, at the South Shaft, works have begun to construct the fencing wall around the Athens Academy garden, with pile construction planned subsequently.



Works for the installation of struts at AKADIMIA Station.

VIVLIOTHIKI SHAFT

Page 9



Vivliothiki Shaft.

In Vivliothiki Shaft, rock mass crushing at the central part of the shaft for the 2nd level is in progress. The excavation percentage of the trench is 17.16%.



Excavation at Vivliothiki Shaft.

KOLONAKI STATION

Page 10



Drilling of anchors – KOLONAKI Station.

At KOLONAKI Station, the excavation of the central trench is 94.86% complete. Excavation works are ongoing at the 9th level.



KOLONAKI Station.

The pre-stressed anchors of the central trench are 89.15% complete (out of total).

EVANGELISMOS TRUMPET SHAFT

Page 11



EVANGELISMOS TRUMPET Shaft.

At Evangelismos Trumpet Shaft, the pile cap beam construction has been completed. Excavation at the 2nd level is ongoing, with 8.78% progress. The pre-stressed anchors' completion stands at 5.05%, and struts have been installed at the 1st level.



Anchor tensioning process – EVANGELISMOS TRUMPET Shaft.

KESSARIANI STATION

Page 12



Concreting of piles – KESSARIANI Station.

At Kessariani Station, 88 out of 146 piles have been constructed.

ILISSIA STATION

At ILISSIA Station, road markings and signage have been installed per the traffic study. Construction is ongoing, with 27 of the 73 required piles installed to date.



Concreting of piles – ILISSIA Station.

GNA SHAFT

Page 13

In GNA Shaft, excavation of Phase A' of the first section of the Forestation Tunnel is underway. Phase A1 progress is 76.34% (142m out of 186.02m), and Phase A2 progress is 62.90% (117m out of 186.02m).



Forestation tunnel – GNA Shaft.

TBM "ATHENA"



TBM - Steering Chamber.

TBM "ATHENA" has bored 230.69 meters of the 502.29 meters for the 4th Interstation (ZOGRAFOU Station – ILISSIA Station), with an excavation progress of 45.93%. The cutter-head and screw have been inspected under atmospheric conditions. After completing maintenance checks, excavation activities have resumed. The overall progress of TBM "ATHENA" up to Evangelismos Trumpet Shaft is 46.09%.

PROJECT: PRELIMINARY WORKS



MINISTRY OF
INFRASTRUCTURE AND
TRANSPORT

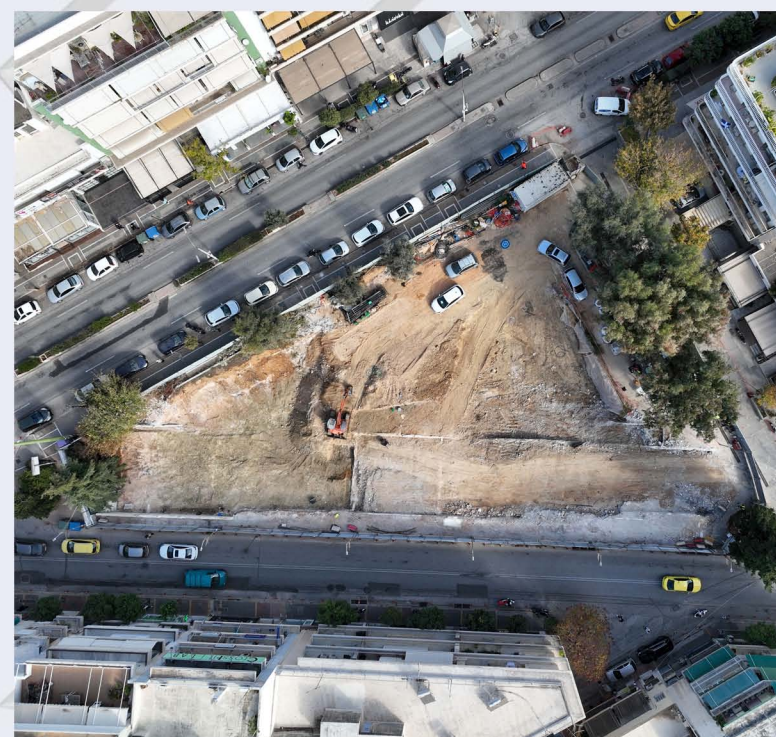


WITH CO-FINANCING OF GREECE AND THE EUROPEAN UNION

EXARCHIA Station

NETWORK RELOCATION

Page 14



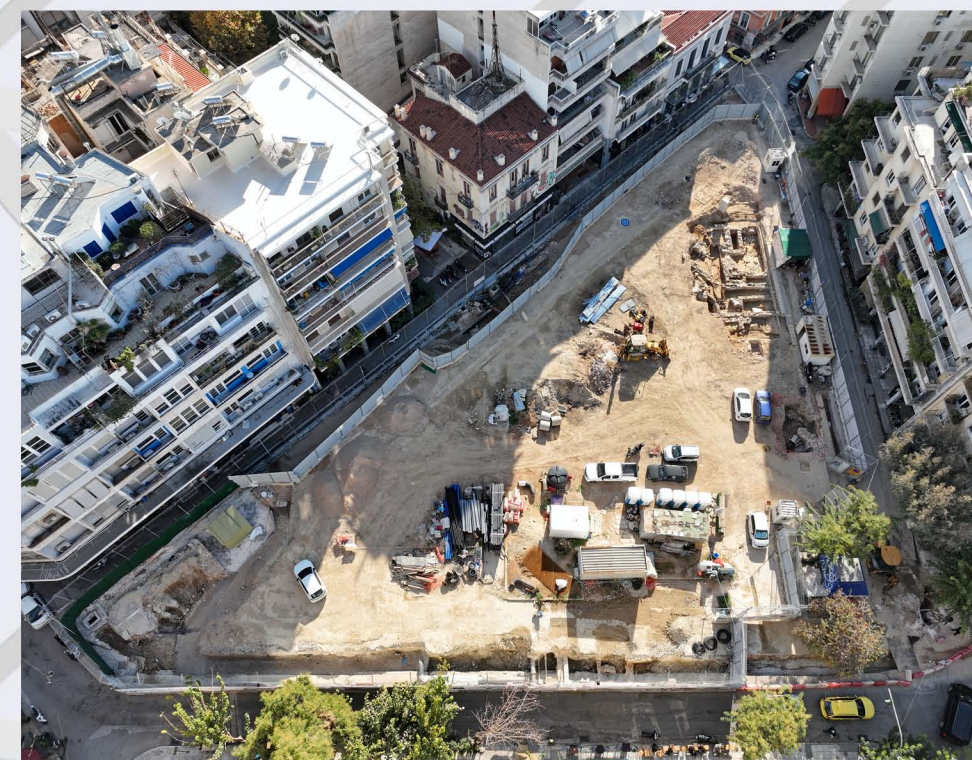
ZOGRAFOU Station.

At AKADIMIA Station, work on diverting the natural gas network is ongoing. At EXARCHIA Station, diversion of the EYDAP network is underway, and works to relocate DEDDIE and OTE networks have started. Similarly, at GOUDI Station, diversion works for the natural gas, DEDDIE, and OTE networks are in progress.

ARCHAEOLOGICAL WORKS

Page 15

Archaeological excavations are ongoing at KYPSELI, EXARCHIA, PANEPISTIMIOUPOLI, and ZOGRAFOU Stations, as well as at Aghios Therapontas ventilation shaft.



Archaeological works – EXARCHIA Station.

ELLINIKO METRO S.A.



LINE

A LANDMARK PROJECT BECAMES REAL!

www.emetro.gr/grammi4

NEWSLETTER LINE 4A

PHOTOS OF LINE 4A PROJECT

Savvas Spyridonos

**All photos used have been taken from the archives of ELLINIKO METRO S.A. (unless stated otherwise).*

***Cover page photo: TBM "NIKI", transportation of precast rings.*

Contact us on: 210-6792065, 210-6792060 | E-mail: info@emetrometro.gr



Co-funded
by the
European
Union



MINISTRY OF
INFRASTRUCTURE
AND TRANSPORT