



# LINE 4<sub>A</sub>

VOLUME 18

MARCH - APRIL 2024



Co-funded by the  
European Union



MINISTRY OF  
INFRASTRUCTURE  
AND TRANSPORT



## PROJECT: LINE 4A "ALSOS VEIKOU – GOUDI"



Akadimia Station

## VEIKOU TBM SHAFT - TBM «NIKI»

Page 2

The construction percentage in VEIKOU TBM Shaft (excavation, temporary retaining, drainage) is now 68.23%.

Moreover, the operation of the TBM "NIKI", as well as the relevant excavation works have commenced. The TBM "NIKI" has bored 41.45 m out of the 472.54 m of the 1st Interstation (VEIKOU TBM Shaft – ALSOS VEIKOU Station). At the same time, the last back-up gantries #3 and #4 were received in order to be connected to the remaining parts of the TBM.

In addition, TBM muck area was developed at the worksite's ground surface and works have commenced for the construction of the tower crane.



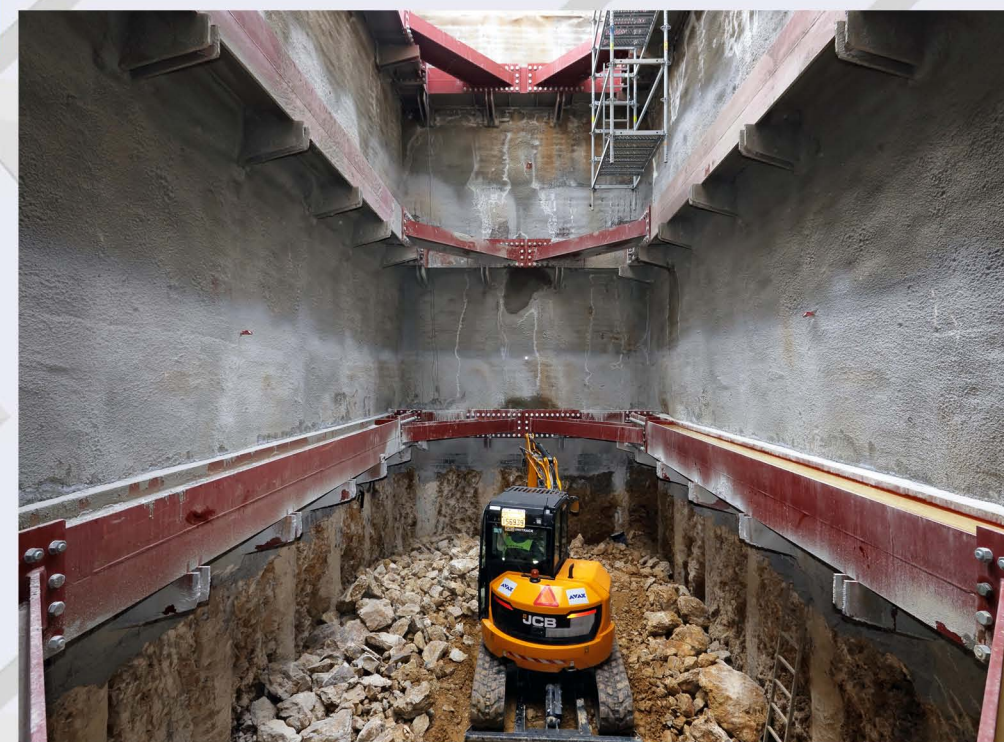
TBM «NIKI» - Veikou TBM Shaft.

## EYDAP SHAFT

Page 3

Excavation works continue in EYDAP Shaft through the use of a hydraulic hammer, which is currently at the 4th level.

Its construction percentage now reaches 54.98%.



Excavation of the 4th level at EYDAP Shaft.



## DIKASTIRIA STATION

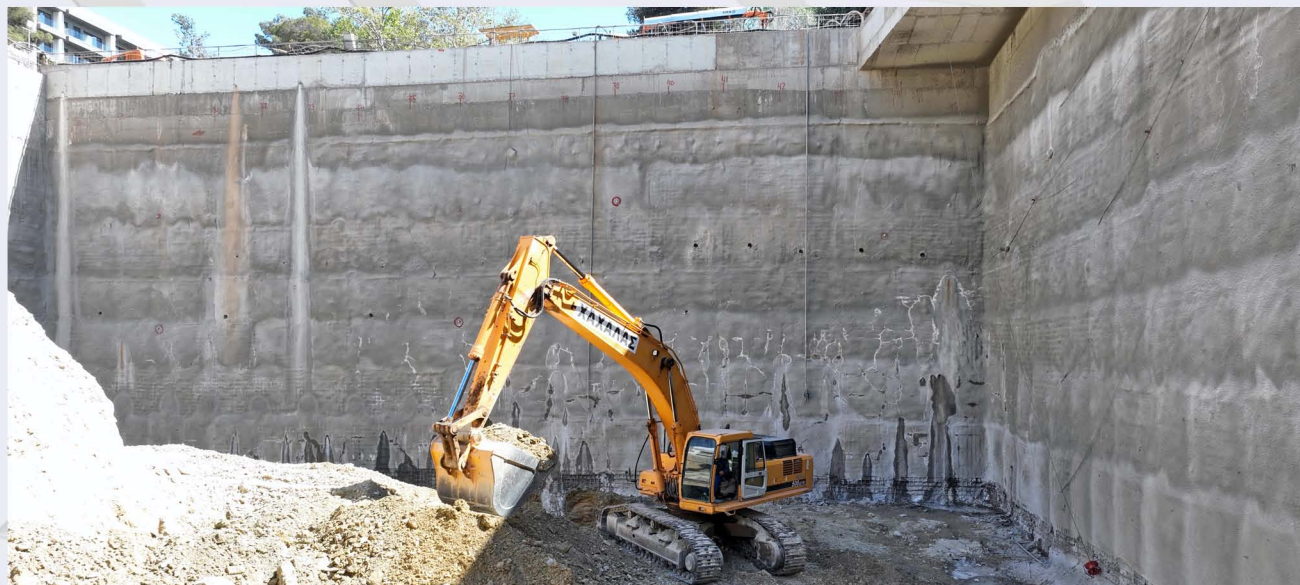
Page 4



Drilling of anchors and excavation in DIKASTIRIA Station.

In DIKASTIRIA Station, the percentage of the main excavation reaches 43.4%, while the gradual construction and drilling of anchors up to the 7th level continue.

In April, Moustoxydi Street was reinstated and was immediately opened up to traffic upon completion of the signaling works.



Worksite installation works in DIKASTIRIA Station.

## KOLONAKI STATION

Page 5



Drilling of 3rd level anchors in KOLONAKI Station.

In KOLONAKI Station, the percentage of the main excavation reaches 53.50%, while excavation works are also in progress at the East Section up to the 5th level.

The completion percentage of the pre-stressed anchors' tension at the Station's main excavation now reaches 42.58%, while the first two rows of anchors have been fully completed.

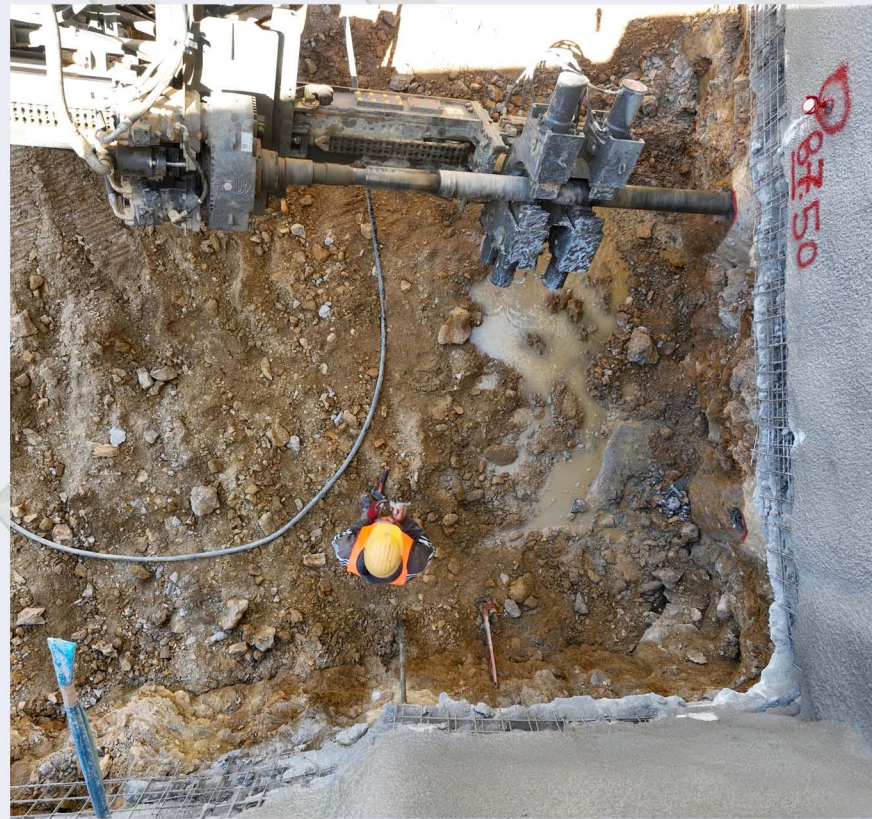


Excavation of the 3rd level at KOLONAKI Station.



## AKADIMIA STATION

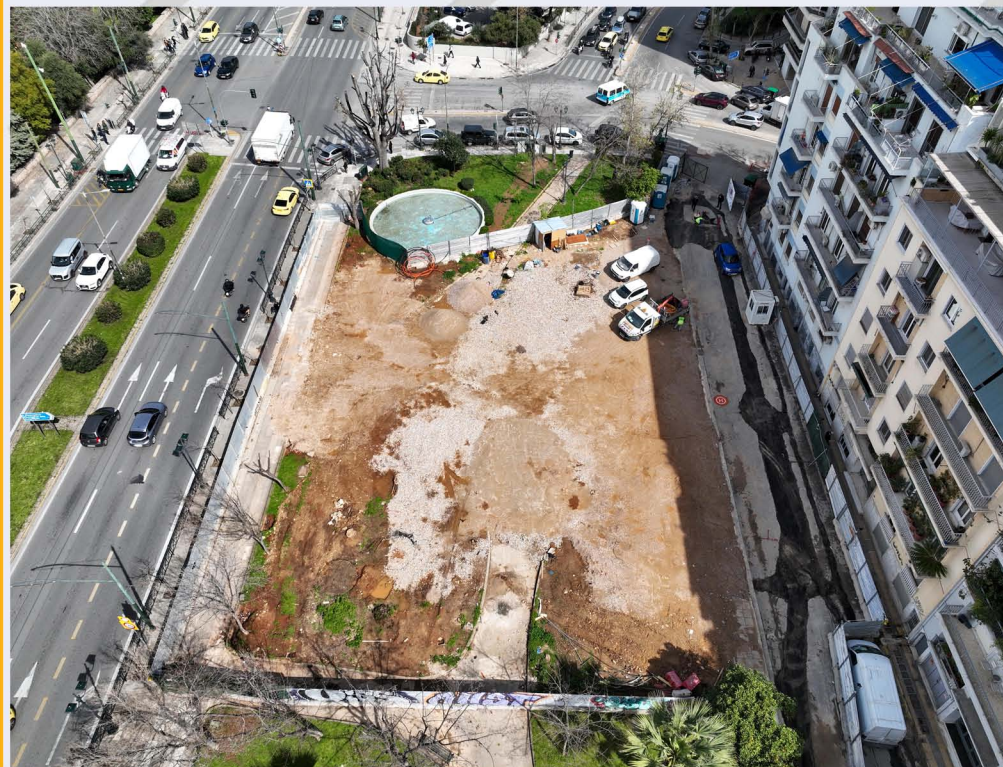
Page 6



Drilling of anchors – AKADIMIA Station.

In AKADIMIA Station, the 3rd level of the main excavation is in progress and the completion percentage of works now reaches 29.22%, while the completion percentage of the pre-stressed anchors tension in the Station's main trench now reaches 29.12%, i.e. 99 out of 340 anchors.

## EVANGELISMOS TRUMPET SHAFT



Concreting of the east side of the pile cap beam in DIKAIOSYNIS Shaft.

Preparatory works at the worksite installations of Evangelismos Trumpet Shaft have commenced. At the same time, the fencing was expanded to reach the limits of the worksite occupation and the transplantation of trees and their pruning have commenced.

## GNA SHAFT

Page 7



Connecting gallery – GNA shaft.



Excavation of connecting gallery – GNA shaft.

In GNA Shaft, the works for the excavation of the connecting gallery of the Forestation continue, while, as regards Phase A' of the access chamber excavation, 20 m have been bored. It is reminded that this connecting gallery will connect GNA Shaft with the forestation tunnel (area intended for the stabling, washing and maintenance of new trains).

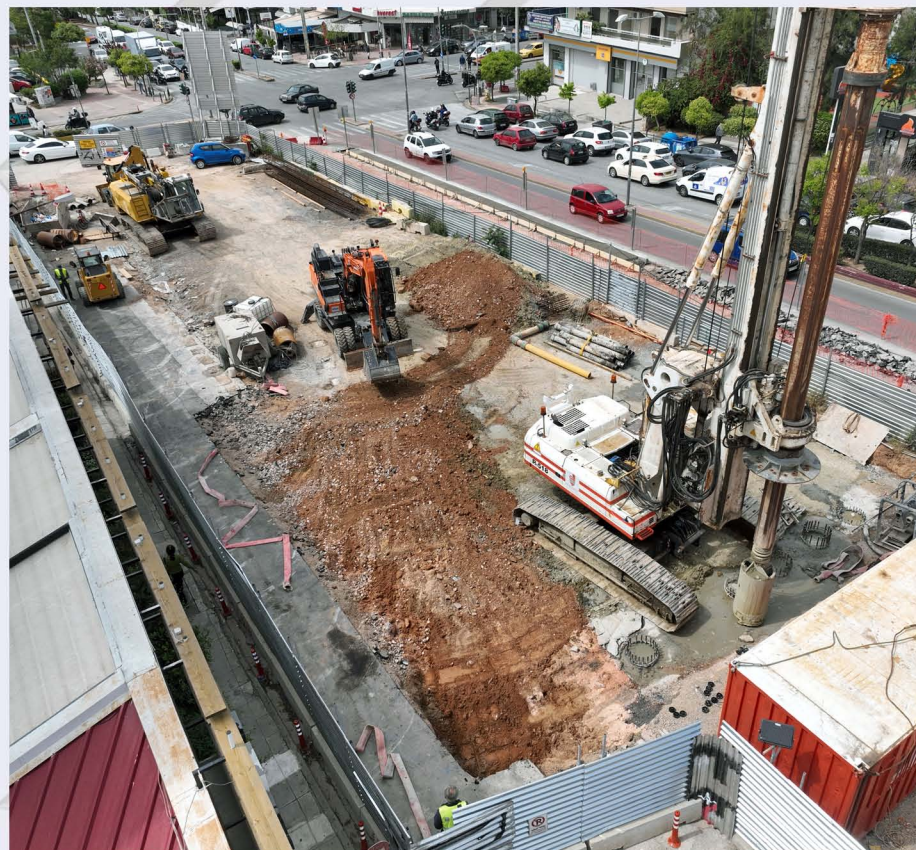




## GALATSI STATION

Page 8

The construction of piles at GALATSI Station has commenced, while 10 out of 79 piles have been completed. Moreover, works falling under phase A' of traffic arrangements have commenced, while the temporary fencing, as well as road signage on Galatsiou Avenue have been installed. Moreover, the fencing at the service road was expanded and a sidewalk was constructed on Protopapadaki Avenue.

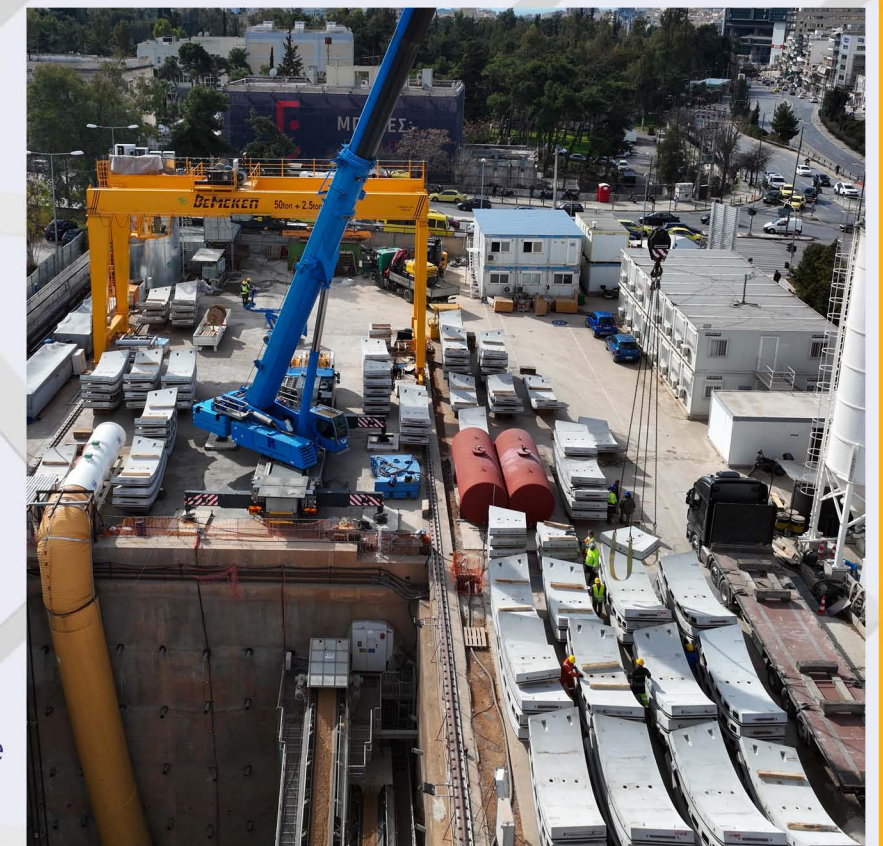


Drilling of piles – GALATSI Station.

## KATEHAKI TBM SHAFT - TBM "ATHENA"

Page 9

TBM "ATHENA" is now located underneath "Panagiotis and Aglaia Kyriakou" Athens General Hospital for Children, having bored 444.10 m out of the 762.66 m of the 2nd Interstation (Dikaiosynis Shaft – Goudi Station) with the excavation progress percentage reaching 58.23%. The overall distance to be covered by TBM "ATHENA" from Katehaki Shaft to Evangelismos Trumpet shaft where the TBM will stop is 5091.67m. The excavation progress of the journey of TBM "ATHENA" reaches 23.78%.



Katehaki TBM Shaft.



## PROJECT: PRELIMINARY WORKS

Panepistimioupoli Station



MINISTRY OF  
INFRASTRUCTURE AND  
TRANSPORT



WITH CO-FINANCING OF GREECE AND THE EUROPEAN UNION

## RELOCATION OF NETWORKS

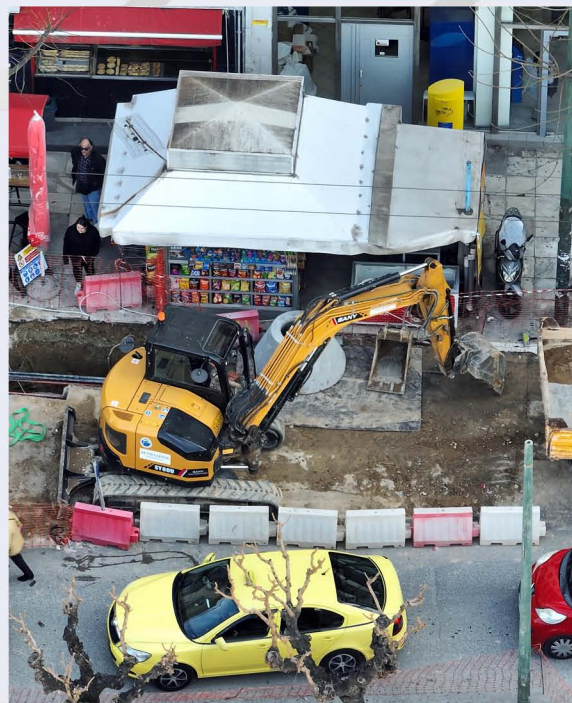
Page 10

As regards preliminary works, in ALSOS VEIKOU Station all works for the diversion of PUO have been completed.

In KYPSELI Station, works for the diversion of DEDDIE and EYDAP networks are in progress, while works for the construction of the new underground substation of DEDDIE are being continued.

In ALEXANDRAS Station, works for the diversion of DEDDIE, EYDAP and OTE networks have been completed, while reinstatement works have commenced.

Finally, in KESSARIANI Station, works for the relocation of ILPAP, EYDAP and OTE networks are being carried out, while at ILISSIA Station in progress are works for the diversion of DEDDIE, OTE and EYDAP networks.



Works for the diversion of networks at KYPSELI St.

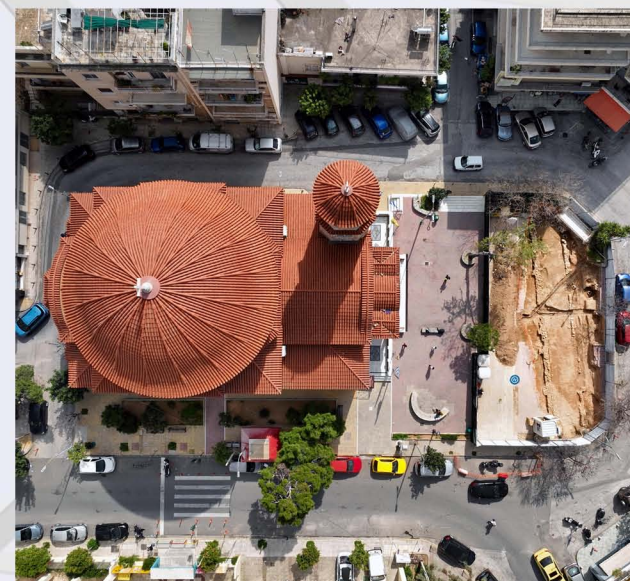
## ARCHAEOLOGICAL WORKS

Page 11

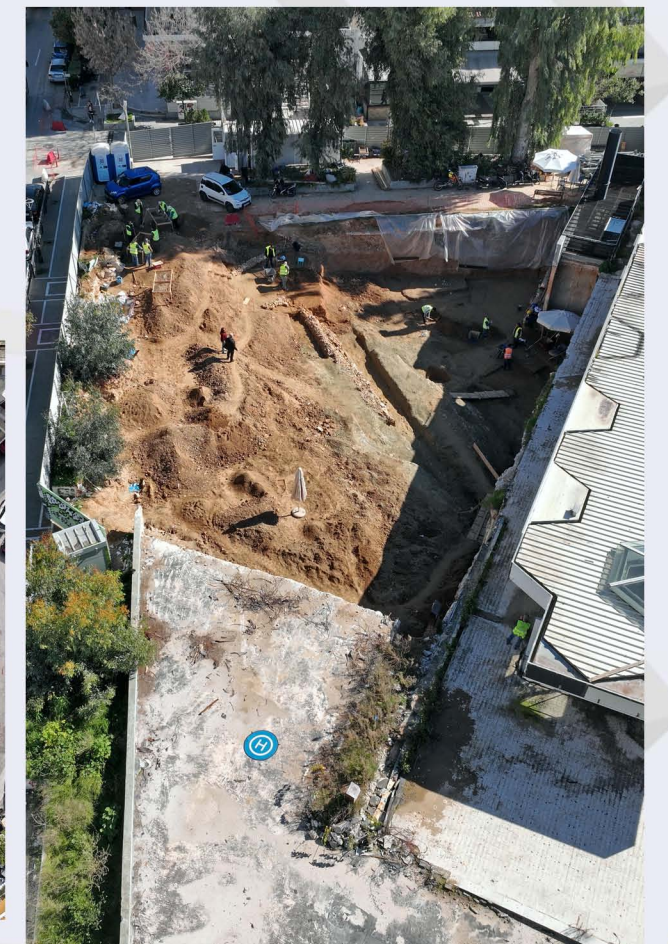


Archaeological works at KESSARIANI Station..

Archaeological works in KYPSELI, EXARCHIA, AKADIMIA (Palamas Street), KESSARIANI, PANEPISTIMIOUPOLI and ZOGRAFOU Stations and in Aghios Therapontas ventilation shaft adjacent to ZOGRAFOU Station are in progress.



Archaeological works at Aghios Therapontas ventilation shaft.



Archaeological works in ZOGRAFOU Station.



# ELLINIKO METRO S.A.



# LINE

## A LANDMARK PROJECT BECAMES REAL!

[www.emetro.gr/grammi4](http://www.emetro.gr/grammi4)

### NEWSLETTER LINE 4A

LINE 4A PHOTOS

Savvas Spyridonos

*\*All photos used have been taken from the archives of ELLINIKO METRO S.A. (unless stated otherwise).*

*\*\*Cover page photo: KOLONAKI Station.*

Contact us on: 210-6792065, 210-6792060 | E-mail: [info@emetro.gr](mailto:info@emetro.gr)



Co-funded  
by the  
European  
Union



MINISTRY OF  
INFRASTRUCTURE  
AND TRANSPORT