



LINE 4_A

VOLUME 16

NOVEMBER - DECEMBER 2023



Co-funded by the
European Union



MINISTRY OF
INFRASTRUCTURE
AND TRANSPORT

PROJECT: LINE 4A "ALSOS VEIKOU – GOUDI"



Veikou TBM Shaft

VEIKOU TBM SHAFT

Page 2

The construction percentage in VEIKOU TBM Shaft (excavation, temporary retaining, drainage) is now 60%.

At the bottom of the shaft, the works related to the construction of the 70m long TBM bed have been completed.

At ground surface, the foundation works of the new lattice boom crane are in progress. Moreover, backup gantry No.1 was assembled at ground level and was later lowered in order to be assembled together with backup gantry no. 2 inside the shaft.



Lowering of back-up gantry in TBM Veikou Shaft.

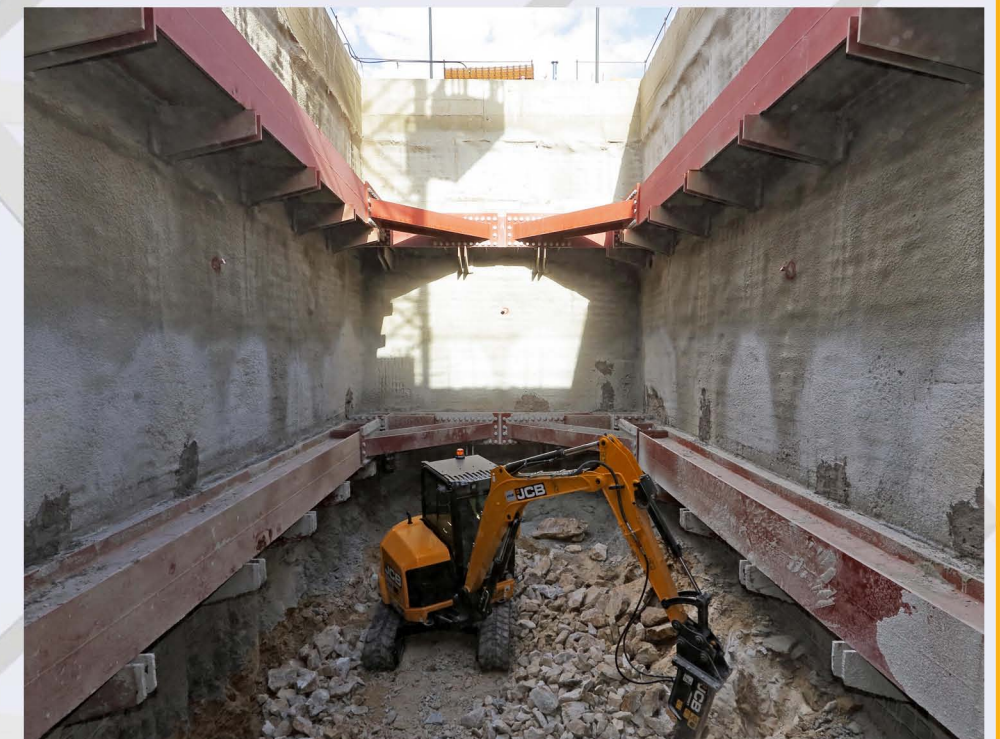
EYDAP SHAFT

Page 3

In EYDAP Shaft, located in Veikou Avenue, the works for the excavation of the 3rd level are carried out using a hydraulic hammer.

The progress of construction works reaches 32%.

Moreover, steel struts have been installed at the 2nd excavation level.



Excavation in progress in EYDAP Shaft.

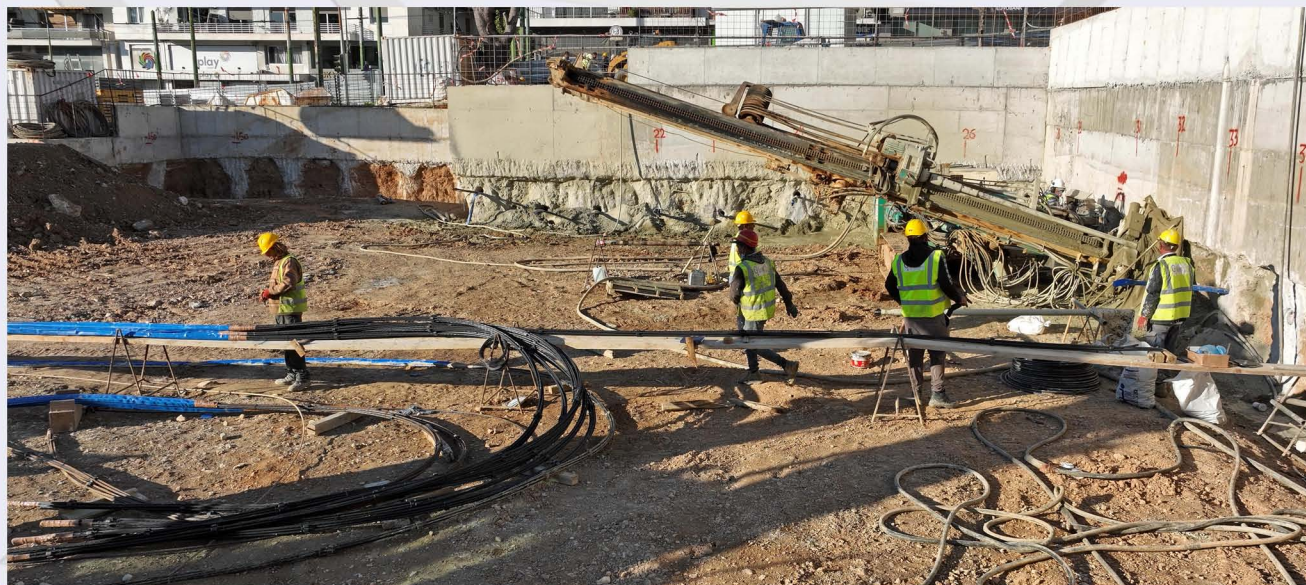
DIKASTIRIA STATION

Page 4



Excavation of the 1st level in DIKASTIRIA Station.

In DIKASTIRIA Station, the anchors of the 1st excavation level are being constructed and the progress of the works for the construction of the pile cap beam of the main trench reaches 93.7%.



Drilling of anchors in DIKASTIRIA Station.

KOLONAKI STATION

Page 5



Excavation of the 2nd level in KOLONAKI Station.

In KOLONAKI Station, the works for the excavation of the 2nd level are in progress, while preparatory works are also in progress for the drilling of the 2nd series of anchors. The completion percentage of the anchoring works in the central trench of the station reaches 12%.



Excavation of the 2nd level in KOLONAKI Station.

AKADIMIA STATION

Page 6



Worksite installation works in AKADIMIA Station.

In AKADIMIA Station, the parapet wall of the pile cap beam at the south entrance of the station has been concreted and in progress are works for the installation of the reinforcement of the pile cap beam at the central trench.

Moreover, drilling works have been executed for the installation of the geological/ structural monitoring instruments within the worksite area, while archaeological investigation works are being carried out towards the south shaft.

DIKAIOSYNIS SHAFT



Excavation of the 1st level in DIKAIOSYNIS Shaft.

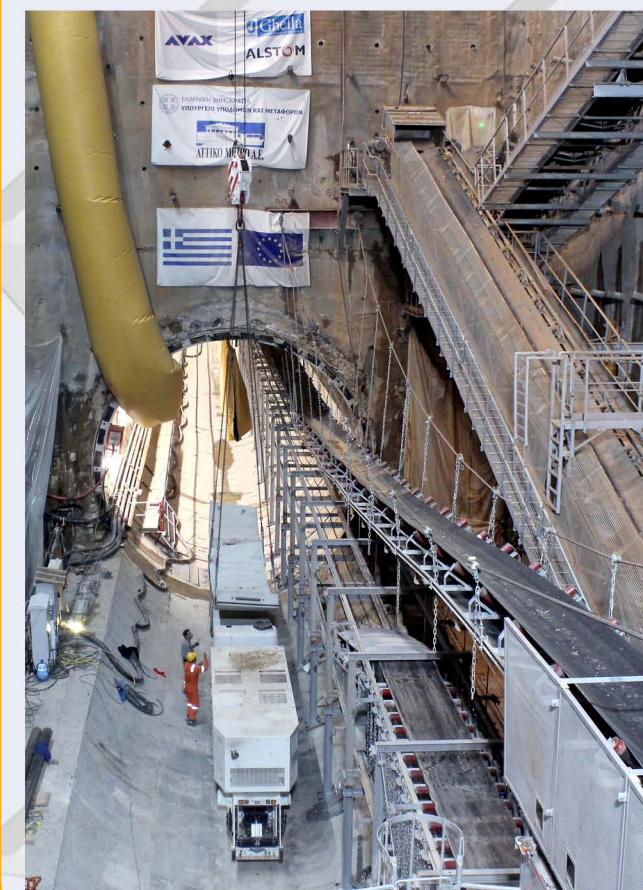
Piling works in the first ventilation shaft that TBM "ATHENA" will encounter have been completed and construction works will commence immediately.

KATEHAKI TBM SHAFT - TBM "ATHENA" & GNA SHAFT

Page 7



Topographical measurements in GNA Shaft.



Transportation of tunnel rings in TBM "ATHENA".

In KATEHAKI TBM Shaft, TBM "ATHENA" continues its journey having bored 410m out of 736.21m of the 1st Intersection (Katehaki – Dikaiosynis Shaft) with the excavation progress percentage reaching 56%.

Moreover, the acceptance of parts of the tower crane has commenced, and its construction is anticipated to commence immediately.

In addition, the TBM hyperbaric chamber was tested in the presence of the doctor in charge and the team responsible for its operation.

In GNA Shaft, waterproofing works have been completed, through the installation of geotextile and water stops, concreting works have been carried out, while the raft reinforcement works at the bottom of the shaft are in progress.



RELOCATION OF NETWORKS

Page 8

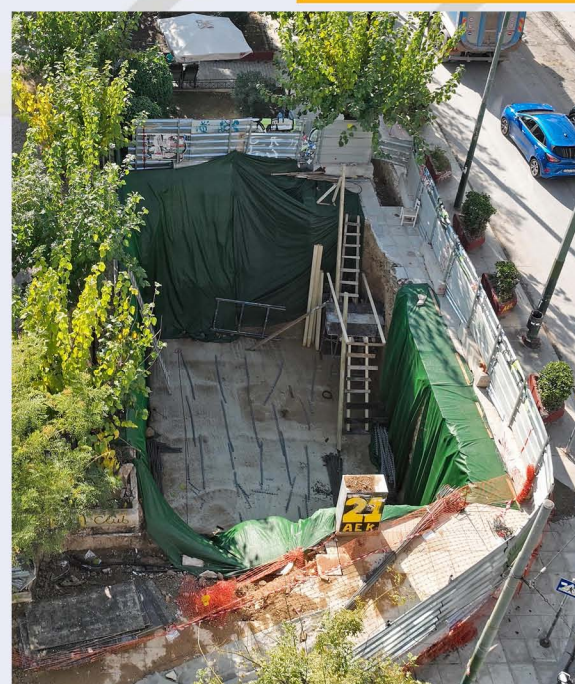
In ALSOS VEIKOU STATION, works for the diversion of DEDDHE, EYDAP and Natural Gas networks are in progress.

In ELIKONOS Station, works for the reinstatement of sidewalks are in progress.

In Kipseli Station, works for the diversion of networks continue, while a new underground substation of DEDDHE is being constructed.

In ALEXANDRAS Station, works for the diversion of DEDDHE, EYDAP and OTE networks continue, while works for the relocation of a signaling substation in Argentinis Square are in progress.

Finally, in KESSARIANI Station, works for the relocation of DEDDHE, EYDAP and telecommunication networks are being carried out, while in DIKAIOSYNIS Shaft, works for the diversion of PUO networks are now complete.



Construction of a new underground substation of DEDDHE in KYSPELI Station.

ARCHAEOLOGICAL WORKS

Page 9



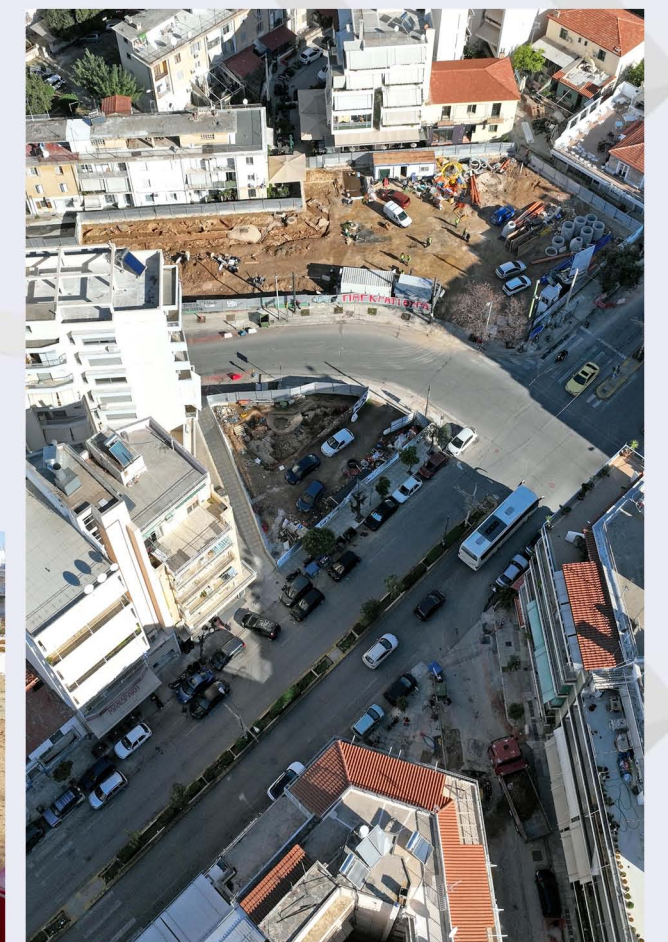
Archaeological works in Aghios Therapontas Shaft.

Archaeological works in KIPSELI, EXARCHIA, AKADIMIA (Palamas Street), KESSARIANI, PANEPISTIMIOUPOLI and ZOGRAFOU Stations and in Aghios Therapontas ventilation shaft adjacent to ZOGRAFOU Station are in progress.

Archaeological investigation works have been completed in Evangelismos trumpet shaft.



Archaeological works in ZOGRAFOU Station.



Archaeological works in KAISARIANI Station.

TREE TRANSPLANTATION

Page 10



Seedlings ready for transplantation –
Evangelismos Trumpet Shaft.



Transportation of tree for transplanting –
Evangelismos Trumpet Shaft.

Further to the completion of the archaeological investigation works at the trumpet shaft located in Naiadon Park, the transplantation of trees to the plant nursery of the Municipality of Athens began immediately.

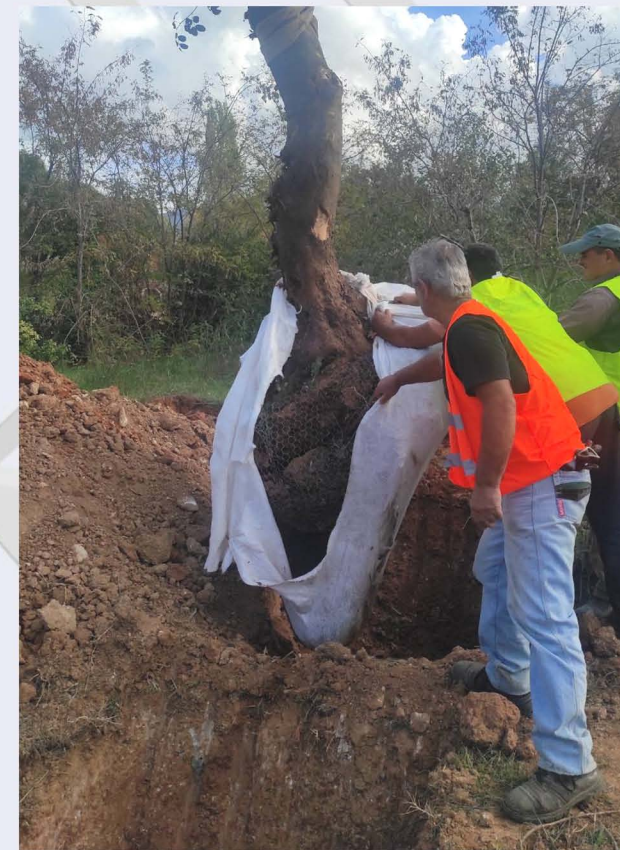
It is reminded that, according to the provisions of the Memorandum of Cooperation between the Ministry of Infrastructures and Transportation, the Municipality of Athens, ELLINIKO METRO S.A. and ANAPLASIS S.A., 2,975 new large trees will be planted at locations to be indicated by the Municipality of Athens.



Transportation of tree for transplanting –
Evangelismos Trumpet Shaft.

TREE TRANSPLANTATION

Page 11



Tree planting process at the plant nursery
of the Municipality of Athens.



Tree planting process at the plant nursery
of the Municipality of Athens.

ELLINIKO METRO S.A. continues its efforts to increase the environmental balance in the city by implementing the terms of the Memorandum of Cooperation and by temporarily transplanting the trees of Naiadon Park and the trees of Exarchia Square to the plant nursery of the Municipality of Athens, in line with the provisions of the Decision for the Approval of the Environmental Terms (AEPO) and the suggestions of the Department of Greenery of the Municipality of Athens.



Transportation of tree for transplanting –
Evangelismos Trumpet Shaft.

ELLINIKO METRO S.A.



LINE

A LANDMARK PROJECT BECAMES REAL!

www.emetro.gr/grammi4

NEWSLETTER LINE 4A

CONTRIBUTORS

- EDITING
Despoina Papastamatiou
- LINE 4A PHOTOS
Savvas Spyridonos

*All photos used have been taken from the archives of ELLINIKO METRO S.A. (unless stated otherwise).
Cover page photo: Lowering of back-up gantry in TBM Veikou Shaft.

Contact us on: 210-6792065, 210-6792060 | E-mail: info@emetro.gr



Co-funded
by the
European
Union



MINISTRY OF
INFRASTRUCTURE
AND TRANSPORT