



LINE 4_A

VOLUME 14

JULY - AUGUST 2023



Co-funded by the
European Union



MINISTRY OF
INFRASTRUCTURE
AND TRANSPORT

PROJECT: PRELIMINARY WORKS



ALEXANDRAS Station

RELOCATION OF NETWORKS

Page 2



New DEDDIE substation at Formionos Shaft.

In ALSOS VEIKOU station, the works for the diversion of DEDDIE, EYDAP and Natural Gas networks continue.

In ALEXANDRAS Station, the works for the diversion of the OTE network have commenced and the works for the diversion of EYDAP and Natural Gas networks continue.

Moreover, in the area of Formionos Shaft the construction of the new underground DEDDIE substation has been completed and the diversions of its networks are being carried out.

Finally, at Dikaiosynis Shaft all works related to network diversions have been completed.

ARCHAEOLOGICAL WORKS

Page 3



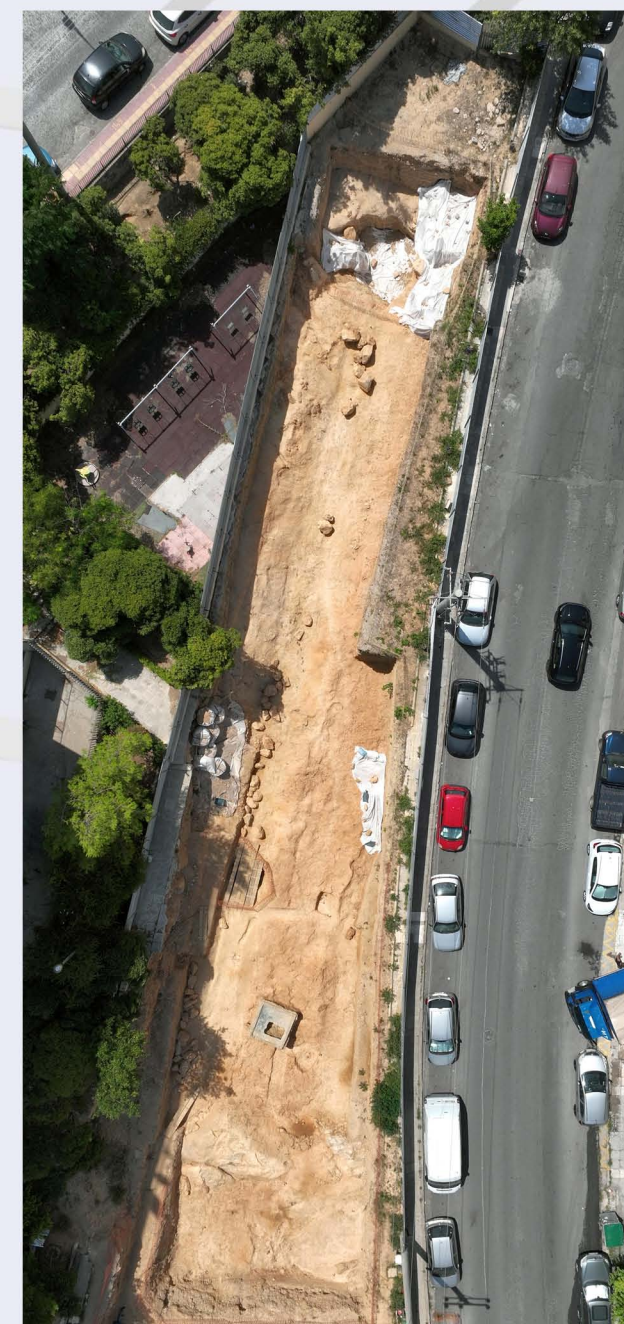
Archaeological works in EXARCHIA Station.



Archaeological works in KIPSELI Station.

At the same time, works are progressing in GALATSI, ELIKONOS, KIPSELI, EXARCHIA, KESSARIANI, PANEPISTIMIOUPOLI and ZOGRAFOU Stations.

Moreover, the works for the excavation of archaeological investigation trenches have commenced at the Trumpet Shaft located at Naiadon Park near EVANGELISMOS Station.



Archaeological works in ELIKONOS Station.

PROJECT: LINE 4A
"ALSOS VEIKOU – GOUDI"



Arrival of TBM "NIKE"

VEIKOU TBM SHAFT & EYDAP SHAFT

Page 4

At Veikou TBM Shaft, the excavation is carried out in stages and the progress of works now reaches 43%. Due to the forthcoming arrival and assembly of the TBM, the following works have been carried out: construction of prefabricated tunnel segment storage area, installation of foundation for the assembly of the TBM cutterhead, construction of slab for the installation of the TBM shield and installation of a telescopic crane for the arrival-acceptance of the TBM cutterhead. In the area of EYDAP shaft on Veikou Avenue, the 2nd excavation level is in progress, while the total progress of excavation works now reaches 25.83%.



Excavation at Veikou TBM Shaft.

TBM "NIKE"

Page 5

In early August, the second TBM arrived from Germany. The TBM parts and equipment were temporarily stored in a safe place and the gradual transfer and assembly at Veikou TBM shaft has already commenced, so that TBM "NIKE" can start her journey towards Evangelismos.



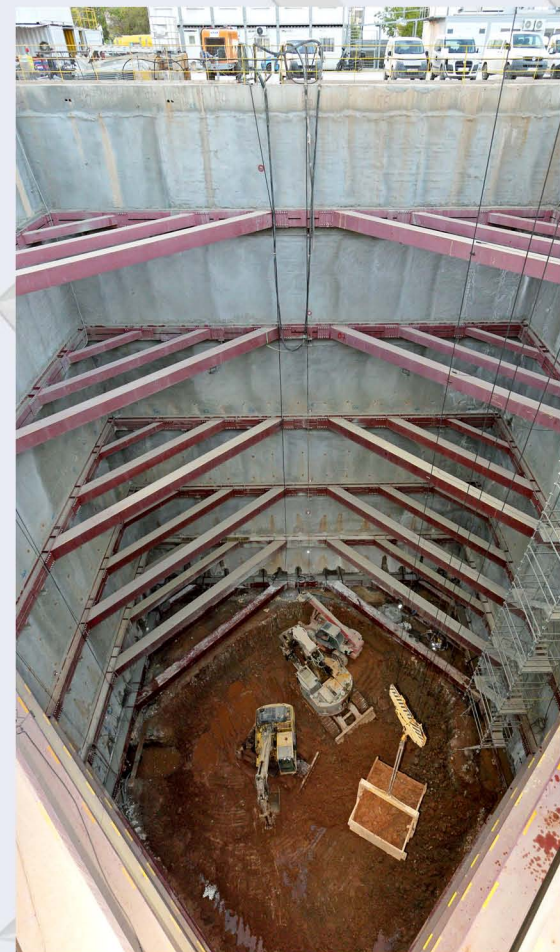
Part of TBM "NIKE" Cutterhead.

KATEHAKI TBM SHAFT – TBM “ATHENA” & GNA SHAFT

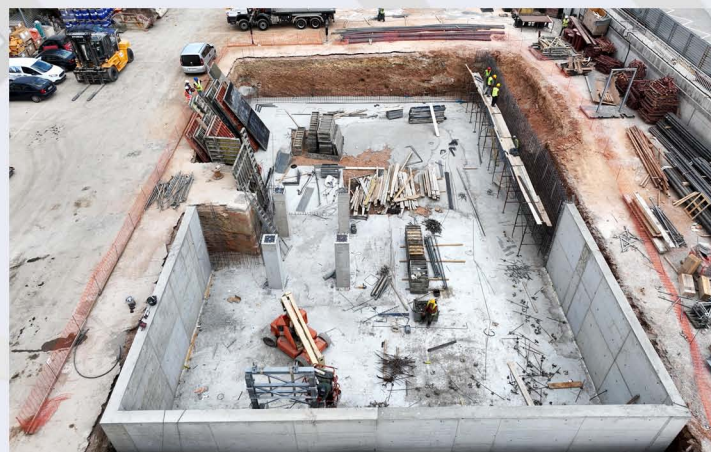
Page 6



Conveyor belt at Katehaki TBM Shaft.



Excavation of the 7th level at GNA Shaft.



Construction of TBM excavation spoil disposal area.

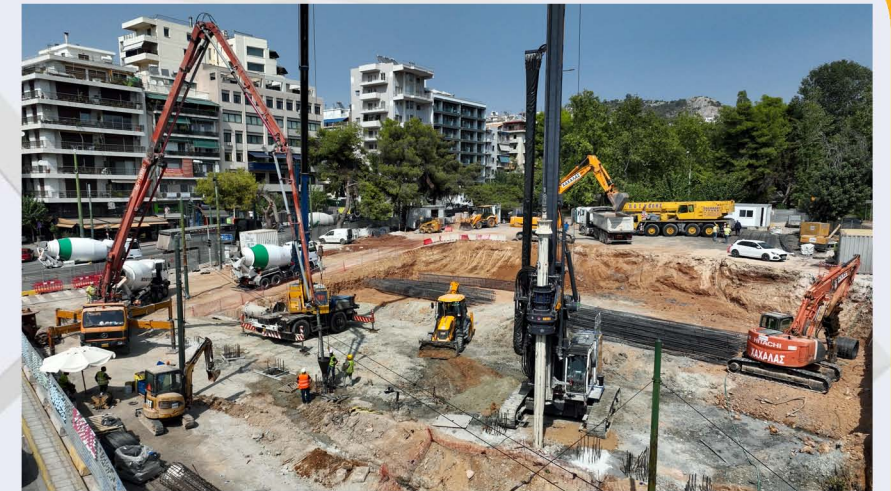
At Katehaki TBM Shaft, the manufacturing and assembly of the conveyor belt system has been completed.

The bases for the assembly of gantry No. 3 at surface level have been placed and, at the same time, the disposal area for the excavation muck of TBM “ATHENA” was laid.

In GNA Shaft, the excavation of the 7th level of the shaft using the hydraulic hammer has been completed. The excavation percentage of the shaft now reaches 82%.

DIKASTIRIA – AKADIMIA – KOLONAKI STATIONS

Page 7



Drilling and construction of piles at DIKASTIRIA Station.



Drilling and construction of piles at AKADIMIA Station.

At the north entrance of AKADIMIA Station, all piles have been completed, while the completion percentage of the piles at the perimeter of the central trench of the Station is 10.71%.

At the same time, DEDDIE’s medium voltage substation was constructed and a crane has been installed for the in situ cast bored piles related works.

Moreover, the installation of worksite offices was effected, the fencing was relocated on the east side of the main trench on Massalias street and the worksite area at the NE side of the trench was configured for the construction of the main station piles.



Drilling and construction of piles at KOLONAKI Station.

At KOLONAKI Station, the construction of piles at the perimeter of the Station excavation was completed.

Moreover, excavation works for the installation of the base of the tower crane are in progress.

In the framework of the geomechanical and structural monitoring, drilling works have been executed for the installation of an instrument (inclinometer) within the worksite area fencing.

ELLINIKO METRO S.A.



LINE

A LANDMARK PROJECT BECAMES REAL!

www.emetro.gr/grammi4

NEWSLETTER LINE 4A

CONTRIBUTORS

- EDITING
Despoina Papastamatiou
- LINE 4A PHOTOS
Savvas Spyridonos

*All photos used have been taken from the archives of ELLINIKO METRO S.A. (unless stated otherwise).

**Cover page photo: Excavation of Veikou TBM Shaft

Contact us on: **210-6792065, 210-6792060** | E-mail: info@emetrom.gr



Co-funded
by the
European
Union



MINISTRY OF
INFRASTRUCTURE
AND TRANSPORT