

# SOME OF THE BENEFITS OF THE NEW LINE

## It serves a great number of infrastructures:

Court Houses, Hospitals, Educational Institutes, Organizations, Departments, Museums.

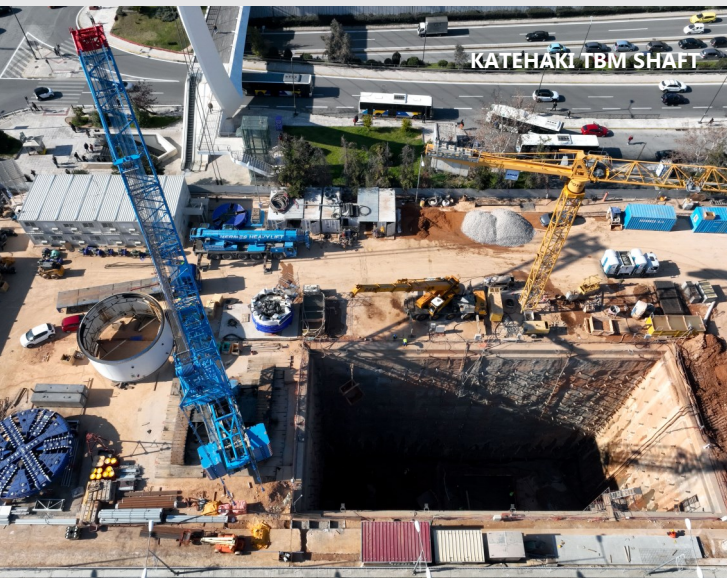
## It contributes to the reduction of circulating vehicles and pollutants.

It upgrades the areas served and increases the cost of real estate properties and shops.

It promotes culture through the display of the project's archaeological finds.

## BENEFITS FOR NATIONAL ECONOMY

Further to its benefits to the traffic and the environment, the construction of Metro projects greatly contributes to the GDP as well. During the construction of the new Line 4, more than 5,000 job positions are expected to be created.



# COMMUNICATION

The construction of the project and the anticipated traffic regulations are expected to change the daily life of the citizens and the enterprises at the vicinity of the worksites.

The aim of ELLINIKO METRO S.A. and the project contractors is to minimize any disturbance caused. To this end, we kindly ask for your understanding and cooperation for the smooth evolution and completion of such a major project, which will be beneficial to the public interest and our fellow citizens.

The Communications Department of ELLINIKO METRO S.A. remains at the disposal of the public throughout the entire construction journey. We will be pleased to hear from you and assist you in any way we can.

WANT TO LEARN MORE? VISIT [www.emetro.gr/grammi4](http://www.emetro.gr/grammi4)

Contact us on : [210-6792065](tel:210-6792065) E-mail: [info@emetro.gr](mailto:info@emetro.gr)



## Section A':

### Alsos Veikou – Goudi

ELLINIKO METRO S.A. gets down to business again in Athens!

After many years of wait, the construction of Athens Metro Line 4 begins!

Section A' of the new Line will be 12,8 km long and it will include 15 new stations.



Co-funded by the European Union



MINISTRY OF INFRASTRUCTURE AND TRANSPORT

# A LANDMARK PROJECT COMES TRUE

## AREAS SERVED

Line 4 Section A' has been designed to serve densely populated areas, as well as major buildings and facilities of the city.

## WORKS

The preliminary works currently in progress concern archaeological investigations and the relocation of PUO networks (Hellenic Electricity Distribution Network Operator – DEDDHE, sewage, water supply, telecommunications, natural gas), as well as the gradual installation of the worksites along with the necessary traffic regulations. The 12.8 km of underground tunnels will be bored using two (2) Tunnel Boring Machines, whereas the 15 new stations will be mainly underground with the minimum surface occupations.

## COMPLETION

Upon completion of this flagship project, citizens and city visitors will be provided with additional safe and rapid transportation options. The understanding and cooperation of us all are of cornerstone importance, so that this project be completed as quickly as possible and with the least possible disturbance.



# LINE 4 IN NUMBERS

- **340.000** passengers served on a daily basis.
- **125.000** passengers moving to/from their work out of the total number of passengers served on a daily basis.
- **53.000** less private vehicles circulating.
- **45.000 square meters** of archeological survey.
- **5.000** new job positions.
- **1.216 MWh** saved on a daily basis.
- **17.000** less tons of CO<sub>2</sub> emitted annually.
- **20** new automated driverless trains.
- **17,5** minutes to travel from Alsos Veikou to Goudi.
- **15** months for public consultation and the issuance of the environmental permit for the project.
- **15** new underground stations.
- **14** minutes to travel from Alsos Veikou to Panepistimioupoli.
- **12,8** km – the length of Line 4A.
- An **8-year** Project Time Schedule.
- **5** minutes to travel from Alsos Veikou to Dikastiria.
- **4** municipalities hosting the new Line.
- **2** transfer stations with the existing Metro network, namely AKADIMIA and PANEPISTIMIO for transfer to Line 2 and EVANGELISMOS Station for transfer to Line 3.

# LINE 4 INNOVATIONS

- Modern driverless trains.
- Technological advanced signaling and train control systems.
- Trains manufactured from friendly to the environment materials, almost fully recyclable.
- Automated doors operation system in trains and platform for passenger safety.
- Train braking regenerated energy.
- Project construction using the Building Information Technology (BIM) for the first time in Greece, ensuring time and resources saving.

