



LINE 4_A

VOLUME 11

JANUARY - FEBRUARY 2023



Co-funded by
the European Union



MINISTRY OF
INFRASTRUCTURE
AND TRANSPORT

RELOCATION AND INSTALLATION OF WORKS OF ART

Page 4



New place for "Kyveli" monument at Egyptou square (Municipality of Athens).

The following works of art have been successfully transferred by specialized work groups on the basis of suggestions made by Galatsi and Athens Municipal Authorities: National Resistance Monument, "Kyveli" monument, "Epinikio" sculpture; these works of art have been placed at the following new locations. The National Resistance Monument was placed at Galatsi square, "Kyveli" monument was placed at in the area of Academy of Athens, and "Epinikio" sculpture was placed at Kolonaki square.



Relocation of the National Resistance Monument at Pigis square (Municipality of Galatsi).



"Epinikio" sculpture was placed at Vrazilias square (Municipality of Athens).



**PROJECT: LINE 4A
"ALSOS VEIKOU – GOUDI"**

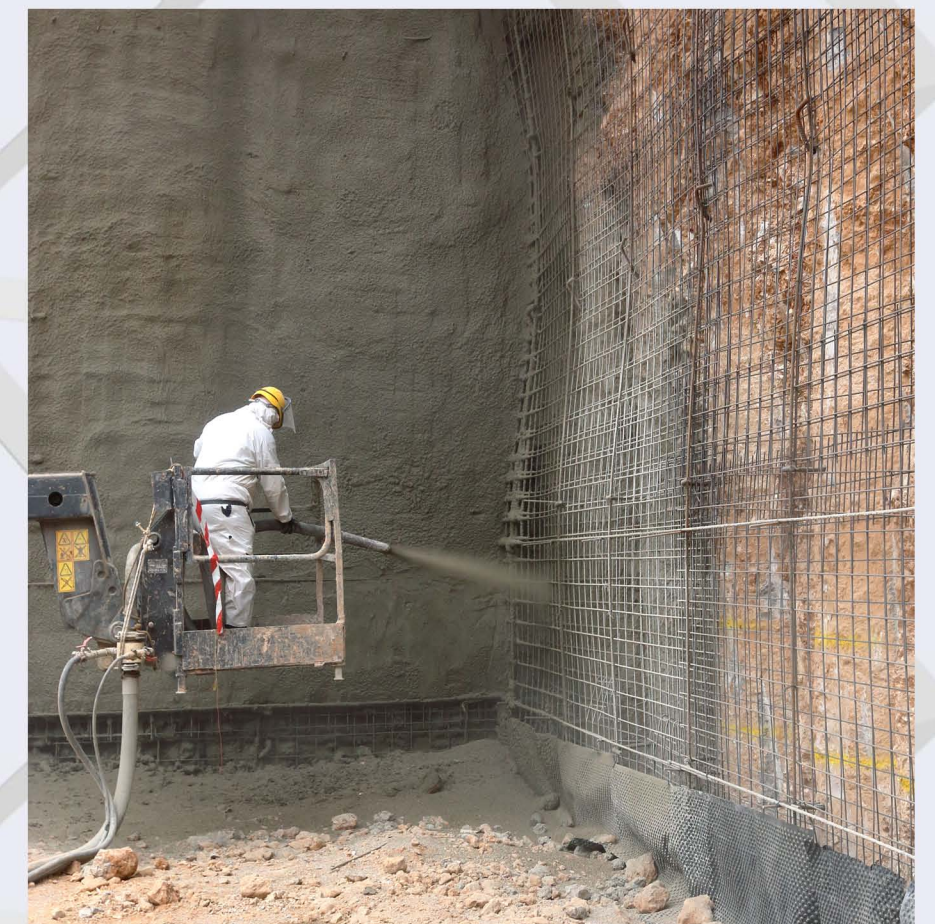
KATEHAKI TBM Shaft

GNA SHAFT

Page 5

In GNA Shaft, the excavation of the 2nd level of the shaft using the hydraulic hammer has been completed. The excavation progress percentage of the shaft now reaches 26%.

Furthermore, steel struts have been installed at the 1st excavation level, while drilling works and works for the installation of supports for the 2nd excavation level were being executed.



Shotcreting at the west side of GNA shaft.

VEIKOU TBM SHAFT

Page 6



Pile drilling in Veikou TBM Shaft.



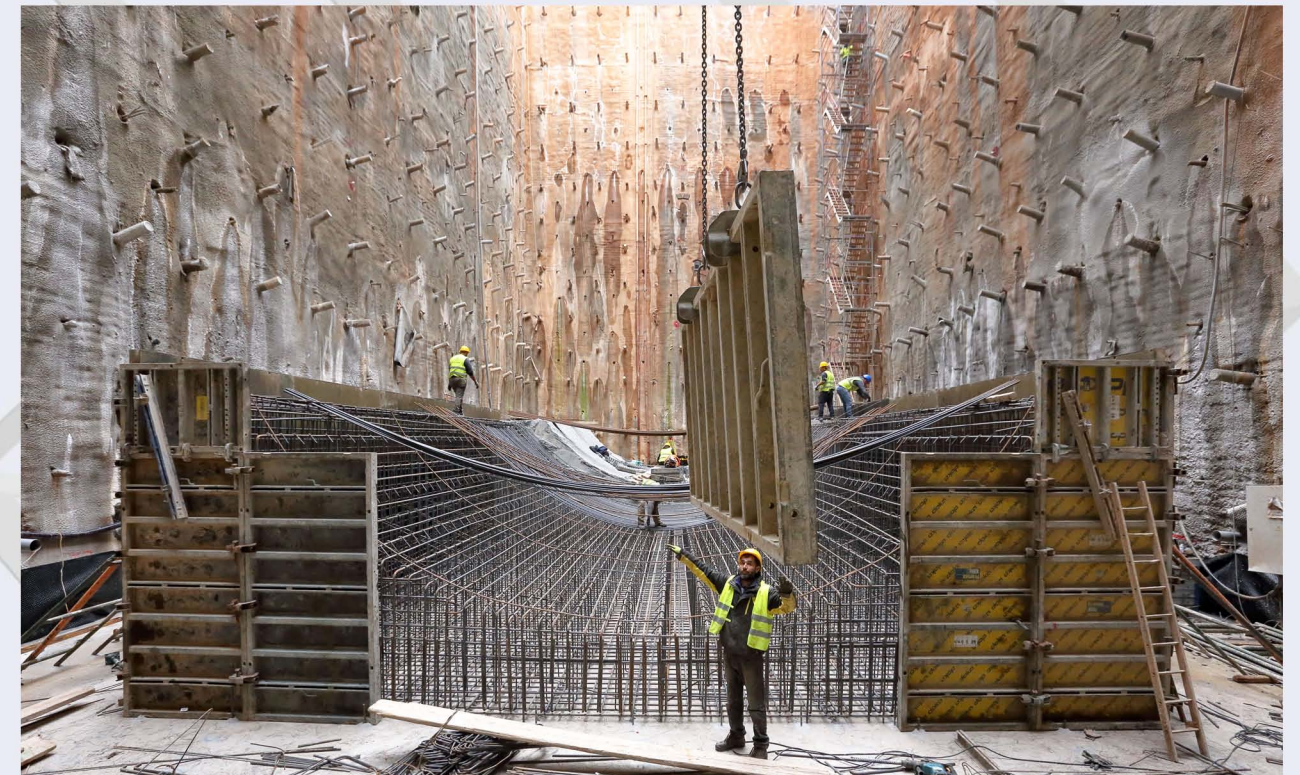
Pile drilling in Veikou TBM Shaft.

Furthermore, the excavation of the 1st level of the trench at the south side (approximately 3m underneath the natural soil) is in progress and worksite installation related works are being carried out.

At Veikou TBM Shaft, 201 out of 209 piles of the trench which will accommodate the second Tunnel Boring Machine (TBM) have already been casted, while the percentage of the progress of pile casting works reaches 96.7%. At the same time, piles' pre-drilling activities are being carried out by drilling machines intended for the foundation of the travelling crane.

KATEHAKI TBM SHAFT

Page 7



Works in progress for the construction of the TBM bed.



Conventional excavation tunnel for TBM launching.



TBM assembly.

The construction works of the 12m-long (NATM) tunnel wherefrom the TBM shall enter are now complete.

Furthermore, the acceptance of the final floor of the shaft was completed and the construction of the TBM bed has commenced immediately. This special structure (bed) is necessary for the smooth launching and assembly of the machine.

Along with the aforementioned works, various parts the TBM machine arrive at the worksite and a series of complex works are being carried out.

More specifically, the following works have been completed: painting of the cutterhead, welding works of the tail shield, assembly of the tunnel water cleaning plant, arrival of the new telescopic crane, welding of brushes at the tail of the shield, arrival of the TBM bearing at the worksite, installation of motors at the bearing.



A LANDMARK PROJECT BECAMES REAL!

www.ametro.gr/grammi4

NEWSLETTER LINE 4A

CONTRIBUTORS

- EDITING
Despoina Papastamatiou, Mania Benissi
- LINE 4A PHOTOS
Savvas Spyridonos

**All photos have been taken from the archives of ATTIKO METRO S.A. (unless stated otherwise).*

***Cover page photo: panoramic shot of Katehaki TBM Shaft.*

Contact us on: 210-6792032, 210-6792060, 210-6792082 | **E-mail:** info@ametro.gr



**Co-funded by
the European Union**



**MINISTRY OF
INFRASTRUCTURE
AND TRANSPORT**