



# LINE 4<sub>A</sub>

VOLUME 9

OCTOBER - NOVEMBER 2022



MINISTRY OF  
INFRASTRUCTURE  
AND TRANSPORT



WITH CO-FINANCING OF GREECE AND THE EUROPEAN UNION





## PROJECT: PRELIMINARY WORKS

KOLONAKI Station

## RELOCATION OF PUO NETWORKS

Page 2

In Veikou TBM Shaft, works for the diversion of networks and their connection with the existing networks have been completed.

Moreover, the works for the diversion of the natural gas network in GALATSI Station have commenced, while in DIKASTIRIA Station works for the diversion of Low and Medium Voltage networks continue and works for the diversion of  $\Phi 160$  water supply network and OTE network in Mantika Street have commenced.

In addition, in KOLONAKI Station works for the diversion of the complex High and Low Voltage networks of DEDDIE, OTE, natural gas and mobile telephony continue.

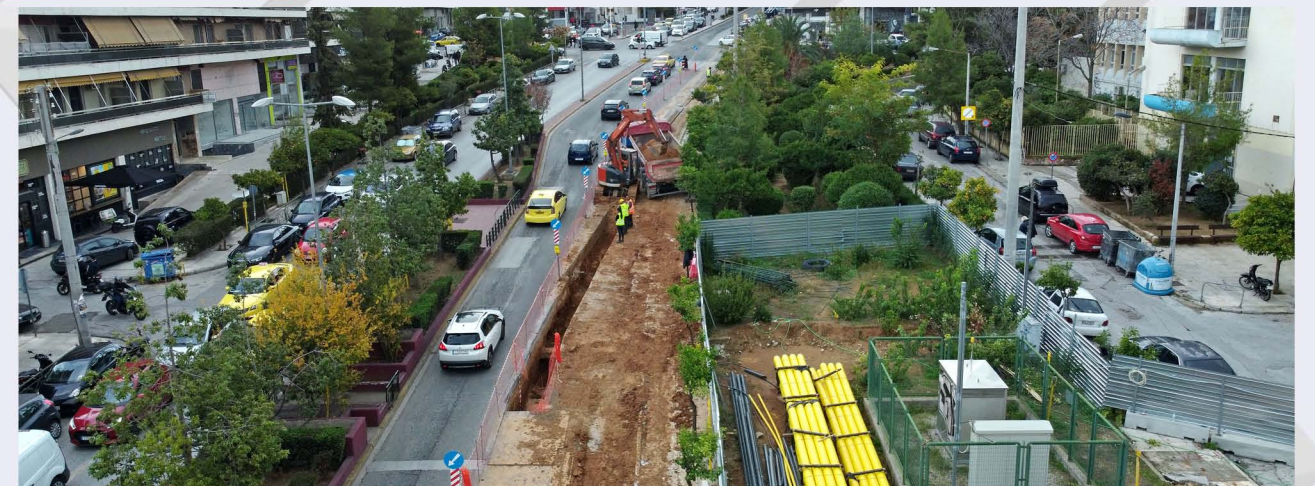
In AKADIMIA Station, works for the diversion of the natural gas network have commenced adjacent to the Cultural Centre of the Municipality of Athens.



PUO networks relocation works in KOLONAKI Station.

## TRAFFIC REGULATIONS

Page 3



Natural gas network relocation works in GALATSI Station.

At TBM Veikou Shaft, the implementation of the traffic deviation works in Veikou Avenue along the lane with direction to Kymis and at the new junction in Christianoupoleos Street, commenced. Moreover, sidewalks have been reinstated in Aigosthenon Street and Veikou Avenue and traffic regulations have been implemented in GALATSI Station to allow for the relocation of PUO networks.



## RELOCATIONS OF STATUES/ WORKS OF ART

Page 4

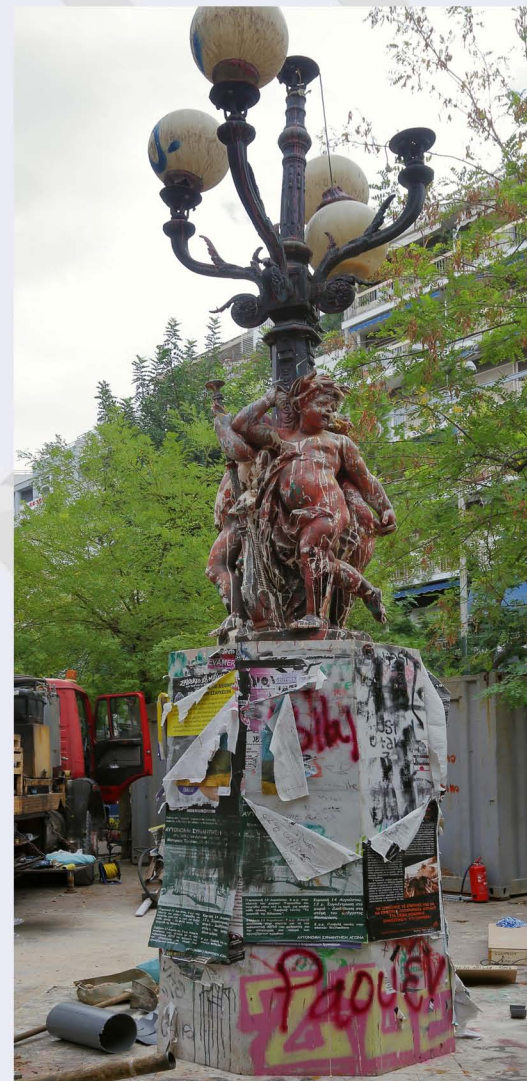
In the framework of the preliminary works contract, the removal, transportation, cleaning, maintenance and temporary storage of statues, busts and works of art located in the worksites continues. Recently, specialized work crews transported the works of art from DIKASTIRIA, GALATSI and EXARCHIA Stations worksites to ensure the unhindered continuation of the works. In particular, the National Resistance Monument was removed from GALATSI Station and was successfully relocated to Pigis Square.



Works for the removal of the National Resistance Monument from GALATSI Station.



Removal of the monument dedicated to the memory of the Reserve Officers from DIKASTIRIA Station.



Removal of the steel pole-mounted luminaire from EXARCHIA Station.

## ARCHAEOLOGICAL WORKS

Page 5

Archaeological investigation has been completed in the area of TBM Veikou Shaft, in the old routing of Veikou Avenue.

At this point, two graves of the 5th century BC have been encountered and investigated by the archaeologists of the responsible Ephorates of Antiquities.

Excavation of investigation trenches in the framework of the archaeological works continues in ELIKONOS, KYPSELI, EXARCHIA, AKADIMIA, ILISSIA, ZOGRAFOU, KESSARIANI Stations and in Vivliothiki Shaft. Finally, in GOUDI Station, archaeological works have been suspended for safety reasons due to the significant depth of the encountered superficial layer.



Archaeological sections in KESSARIANI Station.



Archaeological sections in KYPSELI Station.



Archaeological sections in ELIKONOS Station.



PROJECT: LINE 4A  
«ALSOS VEIKOU – GOUDI»



KATEHAKI TBM Shaft

## KATEHAKI TBM SHAFT

Page 6



Arrival of the TBM cutter head in TBM Katehaki Shaft.

The first state-of-the-art TBM arrived in Athens in October. This TBM will start from Katehaki Shaft, while the transportation of its equipment and its assembly are already in progress on site. At the same time, the excavation of the 10th level of the shaft continues with the total excavation percentage having reached 65%. In parallel, the construction of the anchors (boring – installation – grouting) at the 10th row of this level continues, while a shed was immediately constructed to protect the cutter head.

## GNA SHAFT

Page 7



Excavation of the 1st level in GNA Shaft.

In GNA Shaft, the construction of the piles of the shaft is complete and currently excavation works are carried out at the 1st level using hydraulic hammer.



# ATTIKO METRO S.A.



## LINE

### A LANDMARK PROJECT BECAMES REAL!

[www.ametro.gr/grammi4](http://www.ametro.gr/grammi4)

#### NEWSLETTER LINE 4A

##### CONTRIBUTORS

- EDITING

**Despoina Papastamatiou, Mania Benissi**

- LINE 4A PHOTOS

**Savvas Spyridonos**

\*All photos taken from the AM archives (unless stated otherwise).

\*\*Cover page photo: Excavation of the 10th level in TBM Katehaki Shaft (The excavation is being carried out in the following formation: red clayey gravel to gravelly clay - at greater depths, brownish red breccia).

**Contact us on :** 210-6792032, 210-6792060, 210-6792082 | **E-mail:** [info@ametro.gr](mailto:info@ametro.gr)



MINISTRY OF  
INFRASTRUCTURE  
AND TRANSPORT



WITH CO-FINANCING OF GREECE AND THE EUROPEAN UNION