



LINE 4_A

VOLUME 8

AUGUST - SEPTEMBER 2022



MINISTRY OF
INFRASTRUCTURE
AND TRANSPORT

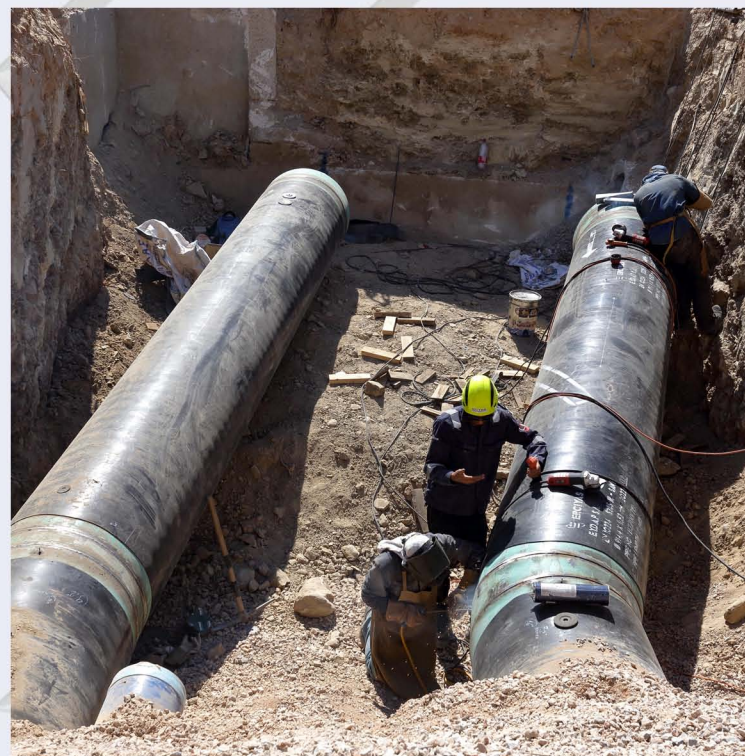


WITH CO-FINANCING OF GREECE AND THE EUROPEAN UNION



RELOCATION OF PUO NETWORKS

Page 2



Welding of $\Phi 900$ water supply ducts in VEIKOU TBM Shaft.

At VEIKOU TBM Shaft, works for the diversion of the water supply network have been completed through the installation, welding and backfilling of the $\Phi 900$ dual ducts of EYDAP (ATHENS WATER SUPPLY AND SEWAGE COMPANY).

Moreover, at DIKASTIRIA Station, works for the diversion of medium and low voltage networks have commenced, while at KOLONAKI Station works for the diversion of high voltage, PPC, OTE and natural gas networks are in progress. At the same time, works for the diversion of the irrigation system at DIKAIOSYNIS Shaft have commenced.

TRAFFIC REGULATIONS

Page 3



Traffic regulations in KOLONAKI Station.

In the beginning of August, the first phase of the traffic regulations at the perimeter of KOLONAKI Station was implemented, in view of ensuring the commencement of the works for the relocation of PUO networks. Meanwhile, at VEIKOU TBM Shaft, works for the implementation of the traffic deviation works along Veikou avenue continue.

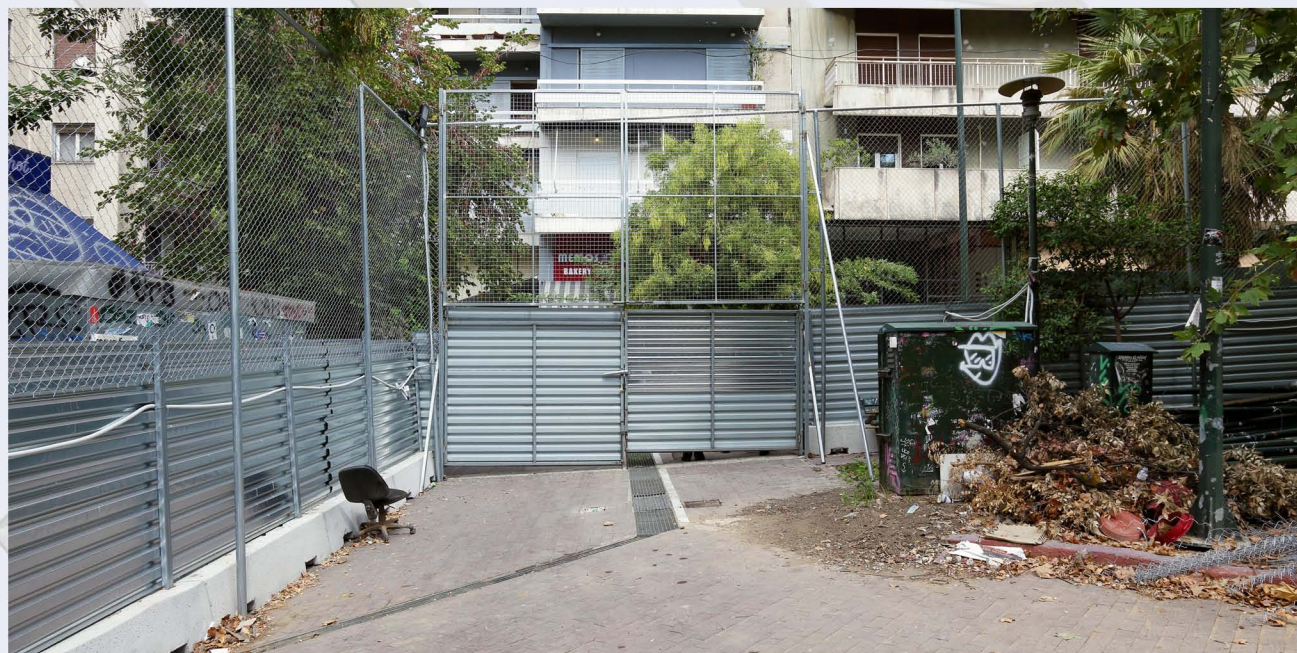
WORKSITE INSTALLATIONS

Page 4



Worksite fencing – EXARCHIA Station.

Worksite fencings have been installed at the worksites of ZOGRAFOU and EXARCHIA Stations. At the worksites of ILISSIA, GOUDI and EXARCHIA Stations removal works have commenced.



Worksite fencing – EXARCHIA Station.



Removal works in GOUDI Station.

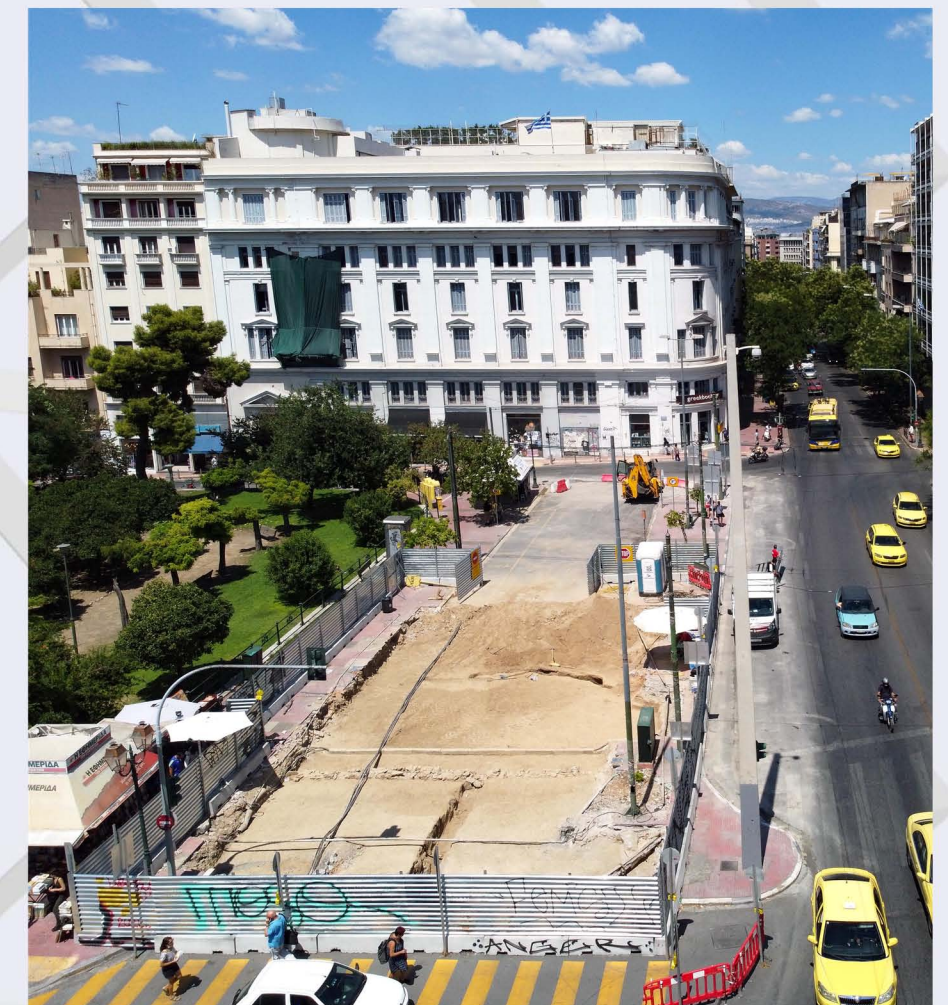
ARCHAEOLOGICAL WORKS

Page 5



Archaeological sections in KYPSELI Station.

Archaeological works have commenced by the responsible Ephorates of Antiquities at the worksites of EXARCHIA and GOUDI Stations. Excavation works for the execution of exploratory trenches continue at the following stations: ELIKONOS, KYPSELI, AKADIMIA, KAISSARIANI and at VIVLIOTHIKI Shaft. In addition, the excavation of exploratory trenches has been completed at the west entrance of PANEPISTIMIOUPOLI Station.



Archaeological works at VIVLIOTHIKI Shaft.

PROJECT: LINE 4A
«ALSOS VEIKOU – GOUDI»

KATEHAKI TBM Shaft

KATEHAKI TBM SHAFT & GNA SHAFT

Page 6



Shotcrete reinforcement equipment at KATEHAKI TBM Shaft.

At KATEHAKI TBM Shaft the installation of the fourth row of anchors has been completed, while the Geomechanical and Structural Monitoring instruments were also installed at each excavation level in order to monitor the ground-construction interaction.

The central worksite offices (ISOBOX) of the Joint Venture responsible for the construction of Line 4A have been transferred at GNA Shaft. Works for their deployment will commence soon.

Finally, pile drilling works for the construction of the shaft continue.

GEOLOGICAL AND GEOTECHNICAL SURVEY

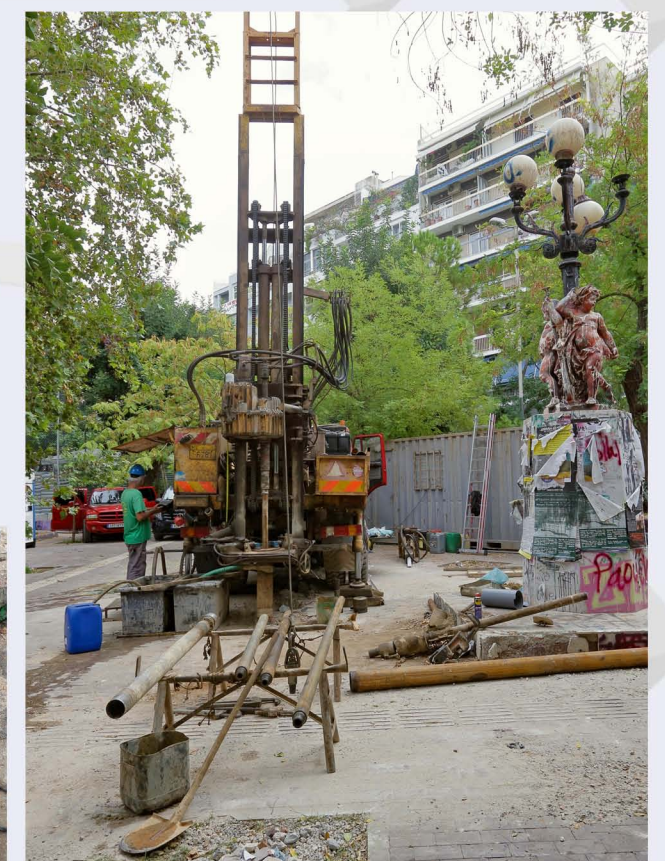
Page 7

In the framework of the Complementary Ground Investigation, a sampling borehole and a pressure-meter testing borehole were executed at EXARCHIA Station.

Execution of complementary boreholes aims to the identification of ground data for the derivation of the required design parameters.



Drilling samples from EXARCHIA Station.



Drilling works in progress in EXARCHIA Station.

ATTIKO METRO S.A.



LINE

A LANDMARK PROJECT BECAMES REAL!

www.ametro.gr/grammi4

NEWSLETTER LINE 4A

CONTRIBUTORS

- GENERAL EDITING - GRAPHIC DESIGN

Despoina Papastamatiou

- SCIENTIFIC EDITING

Sissi Voutiritsa, Mania Benissi, Despoina Papastamatiou

- EDITING

Mania Benissi, Despoina Papastamatiou

- LINE 4A PHOTOS

Savvas Spyridonos

** All photographs taken from AM's archive (unless otherwise stated).*

*** Cover page photo: Excavation at the forth level in KATEHAKI TBM Shaft (The excavation is carried out in the following formations: clay gravels, red clay, while at greater depths the excavation is being performed in reddish brown breccia).*

Contact us on : 210-6792032, 210-6792060, 210-6792082 | **E-mail:** info@ametro.gr



MINISTRY OF
INFRASTRUCTURE
AND TRANSPORT



WITH CO-FINANCING OF GREECE AND THE EUROPEAN UNION