



LINE 4_A

VOLUME 6

APRIL - MAY 2022



MINISTRY OF
INFRASTRUCTURE
AND TRANSPORT



WITH CO-FINANCING OF GREECE AND THE EUROPEAN UNION

PROJECT: PRELIMINARY WORKS



Veikou TBM Shaft

RELOCATION OF PUO NETWORKS

Page 2



Diversion of water supply duct in Veikou TBM Shaft.

In Veikou TBM Shaft, works for the relocation of PUO networks continue, the most significant ones being a) the diversion of the Ø900 dual water supply duct of EYDAP (ATHENS WATER SUPPLY AND SEWERAGE COMPANY) and b) the diversion of the 19 bar natural gas steel network.

TRAFFIC MODIFICATIONS

Page 3



Traffic modifications in Veikou Avenue.

Stage B of the traffic modifications at Veikou TBM Shaft area have been implemented through the installation of new traffic signs along Veikou Avenue.

ARCHAEOLOGICAL WORKS

Page 4



Archaeological trench in KAISARIANI Station.



Archaeological works in KYPSELI Station.



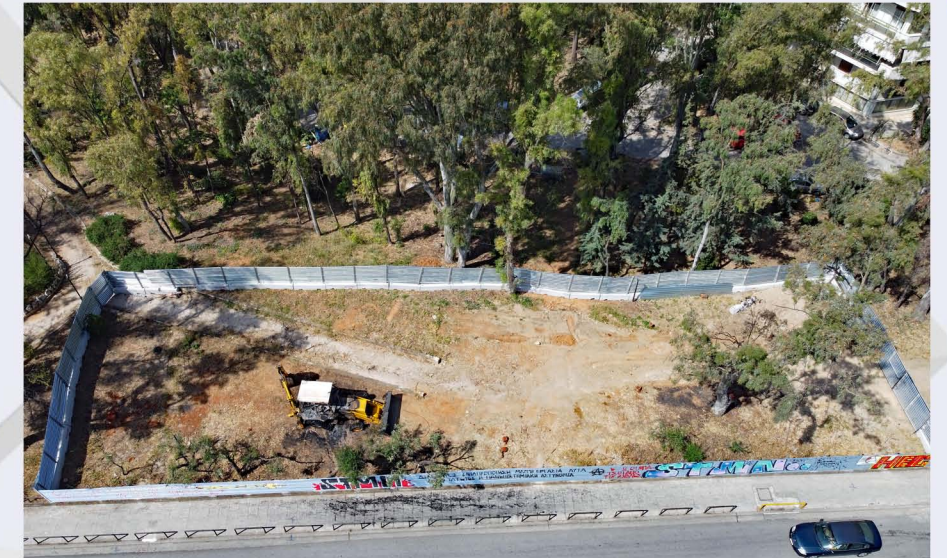
Archaeological works in DIKASTIRIA Station.

Archaeological works are being carried out by the responsible Directorates of in the following stations: ALSOS VEIKOU, GALATSI, ELIKONOS, KYPSELI, DIKASTIRIA, AKADIMIA, KOLONAKI and KAISARIANI. More precisely, in AKADIMIA Station the execution of investigation trenches has commenced on Kosti Palama Street for the construction of the South entrance.

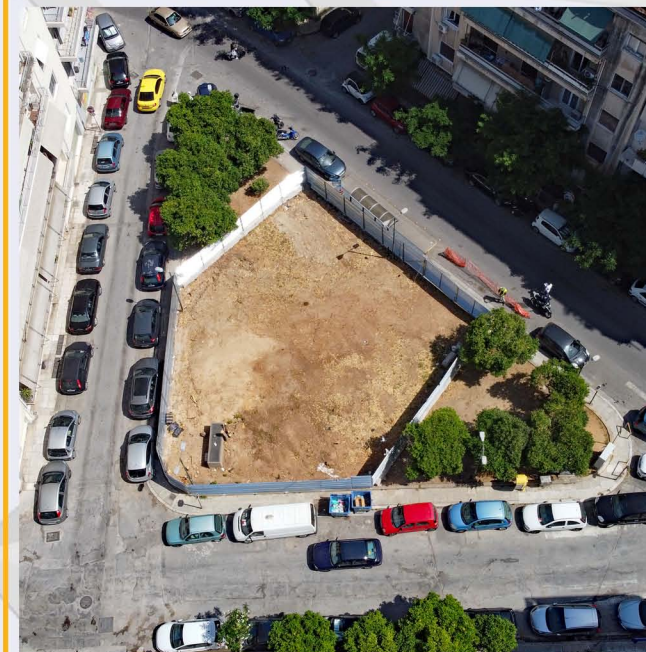
WORKSITE INSTALLATIONS

Page 5

Worksite fencing has been installed for the construction of the North and South entrance in PANEMISTIMIOUPOLI Station. The worksite fencing was also installed in GALATSI Station and in Formionos and Near East Shafts.



Worksite fencing at the north entrance of PANEPISTIMIOUPOLI Station.



Worksite fencing – Formionos Shaft.



Worksite fencing – Near East Shaft.

TREE RELOCATION WORKS

Tree relocation works continue in the Municipalities of Athens and Galatsi. Moreover, in the plant nursery of the Municipality of Athens the last palm trees were relocated, so that the shaft-related works next to GNA Hospital (Hellenic Airforce General Hospital) may commence.



Transplanted palm trees – Tree nursery of the Municipality of Athens.



PROJECT: LINE 4A
«ALSOS VEIKOU – GOUDI»

GNA Shaft - Municipality's seedbed

INSTALLATION OF CONTRACTING JOINT VENTURE OFFICES IN WORKSITES

Page 6

For the installation of the central worksite offices and facilities of the Contracting Joint Venture responsible for the construction of Line 4A, grading works have commenced in Kanellopoulou Street next to GNA Hospital (Hellenic Airforce General Hospital).



Soil grading for accommodating the central worksite offices of the Contracting Joint Venture.

VISIT OF THE MINISTER OF INFRASTRUCTURES & TRANSPORT IN THE WORKSITE

Page 7

Mr. Kostas Karamanlis, the Minister of Infrastructures & Transport and Department officials made their first visit to a worksite of the Athens Metro Line L4A. Mr. Nikolaos Kouretas, Managing Director and Vice-President of ATTIKO METRO S.A. and executives of AVAX S.A.-GHELLA SpA –ALSTOM TRANSPORT S.A., gave them a tour in Katehaki TBM Shaft.



Briefing of the Minister of Infrastructures & Transport by the Managing Director and Vice-President of ATTIKO METRO S.A.

The worksite of the shaft is approx. 7.5 hectares and shall accommodate the 1st TBM's installation which will bore approximately 5.5km of tunnel from KATEHAKI to EVANGELISMOS Stations. A 45mx20m wide shaft, 36.5m deep, is being excavated where the TBM will be lowered and assembled. The excavation of the shaft is expected to be completed in autumn, when the TBM will be delivered in the worksite for its assembly to commence.

ATTIKO METRO S.A.



L I N E

A landmark Project becomes real!

Contact us on:

210-6792032, 210-6792060, 210-6792082

E-mail: info@ametro.gr

*If you wish to learn more,
visit www.ametro.gr/*



**MINISTRY OF
INFRASTRUCTURE
AND TRANSPORT**



WITH CO-FINANCING OF GREECE AND THE EUROPEAN UNION