



LINE 4_A

VOLUME 5

FEBRUARY - MARCH 2022



MINISTRY OF
INFRASTRUCTURE
AND TRANSPORT



WITH CO-FINANCING OF GREECE AND THE EUROPEAN UNION

PROJECT: LINE 4A
«ALSOS VEIKOU – GOUDI»



EIB - ΑΤΤΙΚΟ ΜΕΤΡΟ S.A.

EUROPEAN INVESTMENT BANK - ΑΤΤΙΚΟ ΜΕΤΡΟ S.A.

Page 2



TBM Katehaki Shaft.

On 07/02/2022 the European Investment Bank and ΑΤΤΙΚΟ ΜΕΤΡΟ S.A. concluded a new record EUR 580 million Financing Agreement intended for the construction of the Athens Metro New Line 4A.

The thirty-year duration loan is the greatest financing ever granted for the construction of a single project in Greece. It is solid proof of the confidence shown by the European Investment Bank in the know-how that ΑΤΤΙΚΟ ΜΕΤΡΟ S.A. possesses and will implement for the construction of the greatest Metro “trip” ever planned in Athens.

NEW TECHNICAL CONSULTANT FOR LINE 4A

Page 3



Athens Metro Line 4A.

On 03/03/2022 ΑΤΤΙΚΟ ΜΕΤΡΟ S.A. concluded a Contract for the provision of Technical Consulting Services with the contracting Joint Venture Hill International, Nama Consulting Engineers and Planners and Concept Consulting Engineers for the construction of the Athens Metro Line 4, Section A: Alsos Veikou – Goudi and the future metro extensions.

Under the aforesaid contract, the contracting Joint Venture will provide consultancy services for the design, construction, and commissioning of Athens Metro Line 4, Section A: Alsos Veikou – Goudi, it will also participate in the ongoing Athens Metro Line 3 extension, section Aghia Marina – Dimotiko Theatro, while it will provide its assistance in the design and evolution of the future metro and tramway extension projects in the wider area of the District of Attica and Piraeus.

In particular, the Contracting Joint Venture will participate in every activity (design, tendering, construction, testing, and commissioning) required in the framework of the technical scope of ΑΤΤΙΚΟ ΜΕΤΡΟ S.A. projects under construction and new projects to verify their successful completion. In addition, the contracting joint venture will provide specialized technical solutions, information, and optimization recommendations based on the evolution of technology, support to resolve design issues, and supervision management.

Investing in sustainable transportation is of critical importance for ensuring a better daily life, supporting economic development and creating new job positions, as well as for reduction CO₂ emissions and air pollution.

PROJECT: PRELIMINARY WORKS



Veikou TBM Shaft

TRANSPLANTING

Page 4

Pursuing its efforts to increase the environmental balance in the city of Athens, ATTIKO METRO S.A. continues the transplanting of 129 trees in the Municipality of Galatsi.

More precisely, in the area of ALSOS VEIKOU Station, acacias, jacarantas, locust-trees, sour orange trees, plane trees, plum trees, golden rain trees, pomegranate trees and mulberry trees will be transplanted at the adjacent flower beds as well as in Belogianni and Apostolou Santa Squares. In the area of GALATSI Station, the trees will be transplanted in the near-by sidewalks and flower beds. As concerns ELIKONOS Station, trees will be transplanted in the municipal flower beds, in Galatsi Olympic Center – PALAI and in Alsos Veikou.



Transplanting works in the municipality of Galatsi.

TRANSPLANTING

Page 5



Soil preparation for the acceptance of trees.



Veikou Avenue – Transplanting.



Veikou Avenue – Transplanting works.



Transplanting works – Galatsi Municipality.

At the same time, transplanting works are being continued in the Municipality of Athens, while they will commence in the other municipalities where Line 4A stations will be located, thus, improving the environmental conditions and the life of citizens.

WORKSITE INSTALLATIONS

Page 6



Worksite fencing for the construction of KYPSELI Station.



Worksite fencing on K. Palama Street (AKADIMIA Station).

Worksite fencing was installed at the new worksite intended for the construction of KAISARIANI and KYPSELI Stations.

New worksite fencing was also installed on K. Palama Street in AKADIMIA Station worksite, as well as on Mandilara Square for the construction of the east entrance of ALSOS VEIKOU Station.

TRAFFIC REGULATIONS / RELOCATION OF PUO NETWORKS

Signage posts have been installed for the implementation of traffic regulation Phase A' in Veikou Shaft. Excavation works have also commenced for the foundation of a parapet wall to retain the slope of Alsos Veikou and for the diversion of Ø900 twin water supply ducts of EYDAP Water Supply Company.



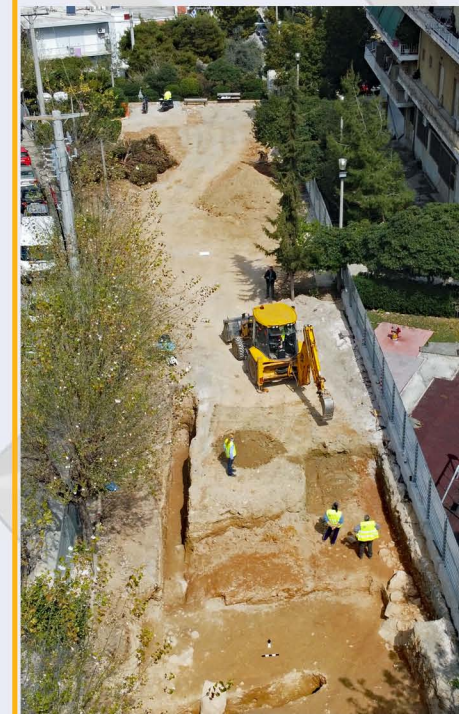
Traffic regulations on Veikou Avenue.



Excavation for the diversion of Ø900 twin water supply ducts of EYDAP Water Supply Company.

ARCHAEOLOGICAL WORKS

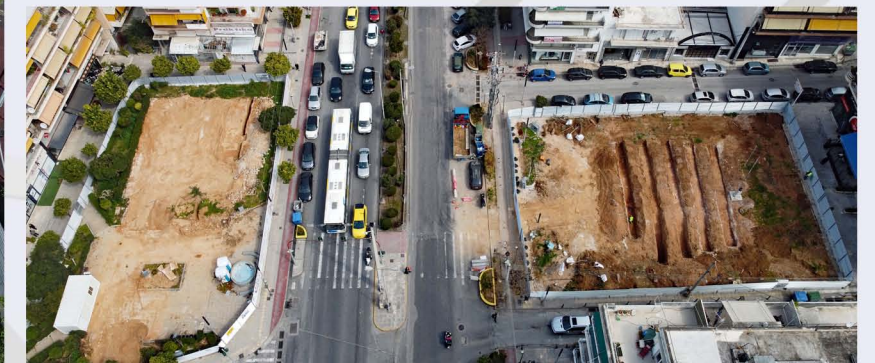
Page 7



Archaeological works in ELIKONOS Station.



Archaeological works in DIKASTIRIA Station.



Archaeological works in ALSOS VEIKOU Station.

Archaeological works executed by the responsible Departments of Antiquities are being continued in AKADIMIA, KOLONAKI, ALSOS VEIKOU and DIKASTIRIA Stations.

The execution of works for archaeological investigation trenches have also commenced in ELIKONOS Station, as well as at the new worksite installations of KAISARIANI and KYPSELI Stations.

TRANSFER OF STATUES / WORKS OF ART

The five busts and the column of Kolonaki housed in Kolonaki Square have been packaged and temporary stored within the worksite area of KOLONAKI Station. The marble column will be the only item to remain in situ throughout the duration of the works for the construction of KOLONAKI Station, as suggested by the Department of Antiquities of Athens.

In AKADIMIA Station the works for the removal of pieces of marble architectural fragments from the worksite area in the green area at the north of the building of the former Cultural Center of the Municipality of Athens.



Archaeological works in KOLONAKI Station.



AKADIMIA Station – Installation of pieces of marble architectural fragments.

ATTIKO METRO S.A.



LINE

A landmark Project becomes real!

Contact us on:

210-6792032, 210-6792060, 210-6792082

E-mail: info@ametro.gr

*If you wish to learn more,
visit www.ametro.gr/*



**MINISTRY OF
INFRASTRUCTURE
AND TRANSPORT**



WITH CO-FINANCING OF GREECE AND THE EUROPEAN UNION