



LINE 4_A

VOLUME 1

MAY – SEPTEMBER 2021



MINISTRY OF
INFRASTRUCTURE
AND TRANSPORT



WITH CO-FINANCING OF GREECE AND THE EUROPEAN UNION

PROJECT: PRELIMINARY WORKS



Akadimia St.

RELOCATION OF PUBLIC UTILITY ORGANIZATIONS (PUO) NETWORKS

Page 2



Works for the relocation of PUO networks in Alexandras Avenue.

Athens Metro Line 4 (Section A'), the greatest traffic and environmental project ever executed in an urban environment, has commenced in order to breathe life into many densely populated regions of Attica Basin with poor public transport services. The first worksites have already been installed and preliminary works have commenced since the beginning of summer.

The scope of preliminary works includes topographical surveys, traffic studies and designs for the relocation of the existing PUO networks crossing the excavation outlines of the trenches.

WORKSITE OCCUPATIONS

Page 3



Tiles removal in the Academy of Athens.

Fencings have been installed in various locations of the city (Akademy of Athens, Courts, Evangelismos, Veikou Avenue, Katehaki Avenue) to delineate and protect worksite areas.

The worksites for the preliminary works shall remain in the municipalities of Athens, Kessariani, Zografou and Galatsi for the next 30 months.



Installation of metal sheets in Evangelismos.



ARCHAEOLOGICAL WORKS

Page 4

The Athenian earth holds in its embrace the traces of older eras of the city, a city that still remains the symbol and the guardian of universal cultural heritage.

The construction of the Metro brings to light significant finds encountered during the archaeological excavations and, thus, contributes significantly to the revealing of the history of Athens.

In full respect to cultural heritage, ATTIKO METRO S.A. in cooperation with the Ministry of Culture and the Archaeological Department make coordinated efforts to preserve, transport and reveal the archaeological finds.



Archaeological sections.

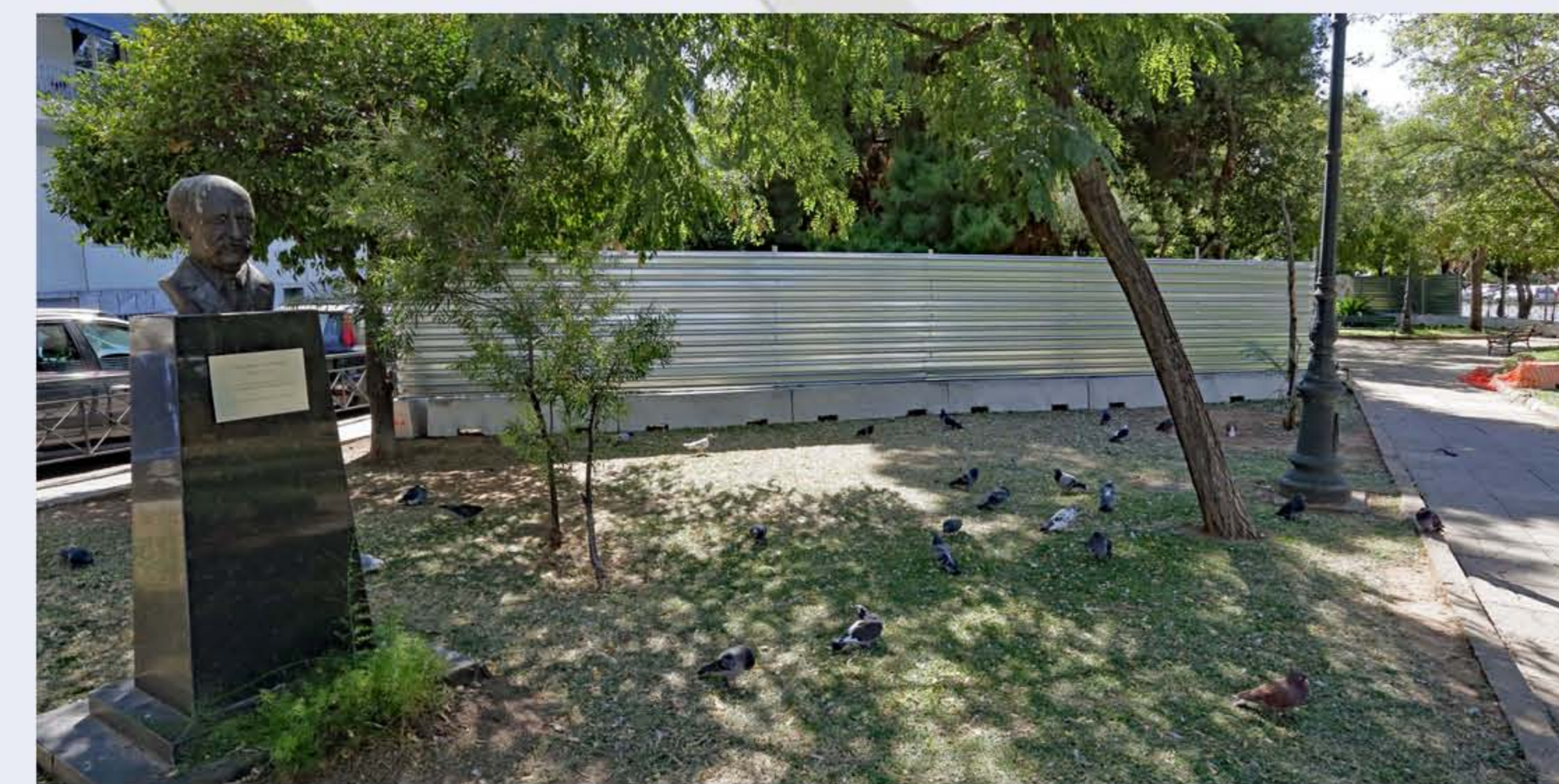


Archaeological section.

Archaeological activities include investigation works, inventory works, excavation works, preservation, detachment, transport, safe keeping – temporary storage and placing back of the archeological finds.

TRANSPORT AND STORAGE OF STATUES

Page 5



Evangelismos Trumpet Shaft.

The contract for preliminary works includes inter alia transport, placing to a new location and temporary storage of statues, busts and works of art found within the boundaries of the worksites to ensure unobstructed continuation of the works.

Statues shall be stored in an area that each Municipality will designate and shall be placed back after the end of the works.



Monument dedicated to the memory of the Reserve Officers..



Katexaki Shaft

GEOLOGICAL AND GEOTECHNICAL RESEARCH

Page 6



Borehole samples from Kypseli Station.



Sample taken immediately after the drilling.



Sampling drilling rig.

Line 4 – a 12.8 km long line.

In order to define the geological and geotechnical conditions, sampling boreholes have been executed all along Line 4_A. The main purpose of the boreholes is to identify all those characteristics necessary to ensure the most safe and economic execution of the Project.

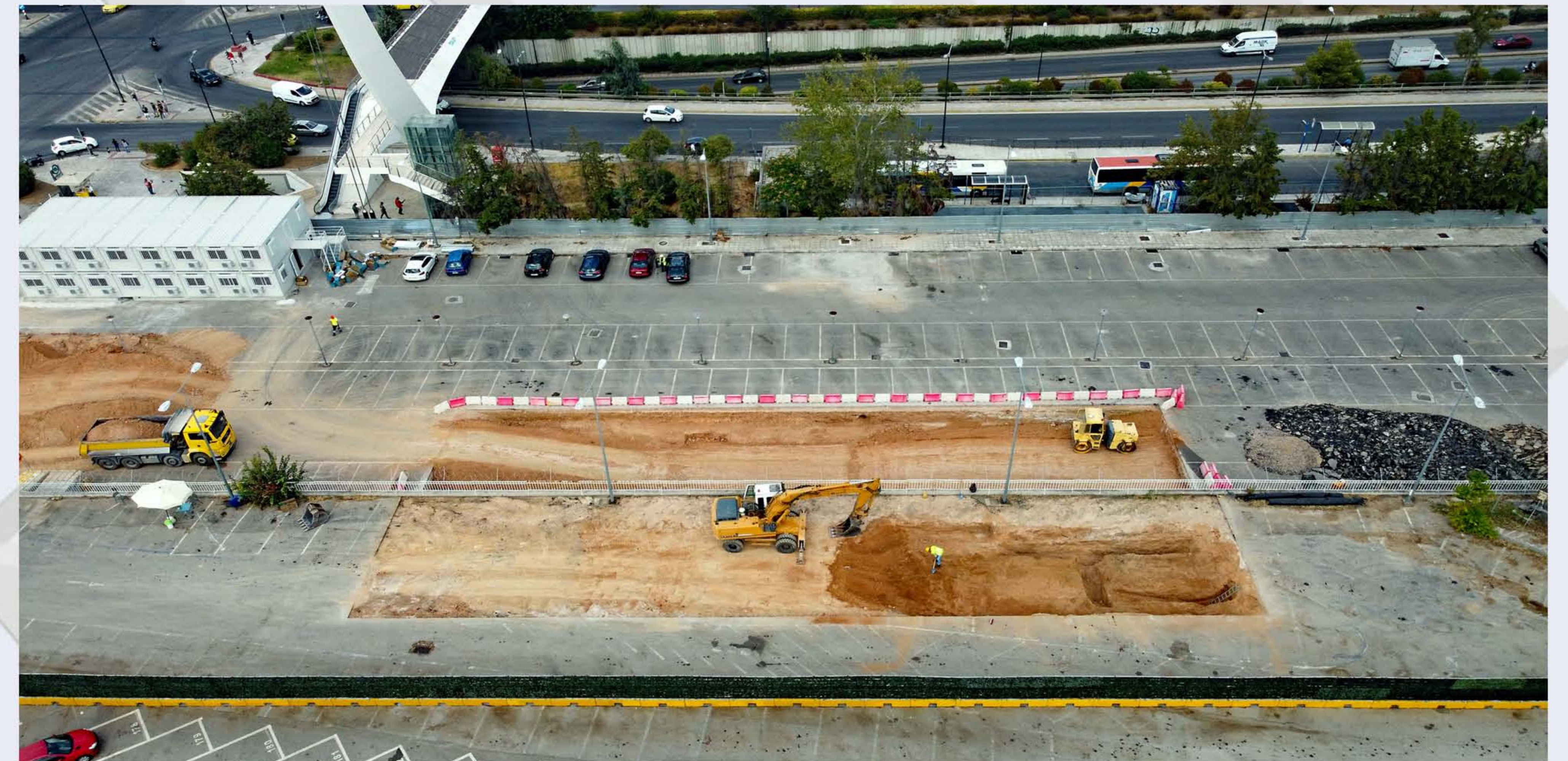
The Contracting Joint Venture prepares the Supplementary Investigation of Subsoil and assesses all pre-existing subsurface elements in order to identify the required design parameters for all Project sections.



Borehole in progress.

INSTALLATION OF THE 1st WORKSITE OF LINE 4_A

Page 7



Katehaki TBM Shaft.

The first worksite of Line 4_A was set up to house the installation of the 1st Tunnel Boring Machine (TBM). It is located in the former Metro parking area at the junction of Messogion with Katehaki Avenues, on the side of Katehaki Metro Station, occupying also a section of the yard of 401 General Military Hospital of Athens. Katehaki TBM Shaft shall be constructed using the Cut & Cover method. The TBM shall be assembled in this Shaft in view of excavating a tunnel section of the Project. In the future, Line 4 KATEHAKI Station shall be constructed in this location and shall be connected with the existing Station of Line 3.



The first worksite of Line 4_A.

ATTIKO METRO S.A.



LINE

A landmark Project becomes real!

Contact us on:

210-6792032, 210-6792060, 210-6792082

E-mail: info@ametro.gr

*If you wish to learn more, visit
www.ametro.gr/grammi4*



**MINISTRY OF
INFRASTRUCTURE
AND TRANSPORT**



WITH CO-FINANCING OF GREECE AND THE EUROPEAN UNION